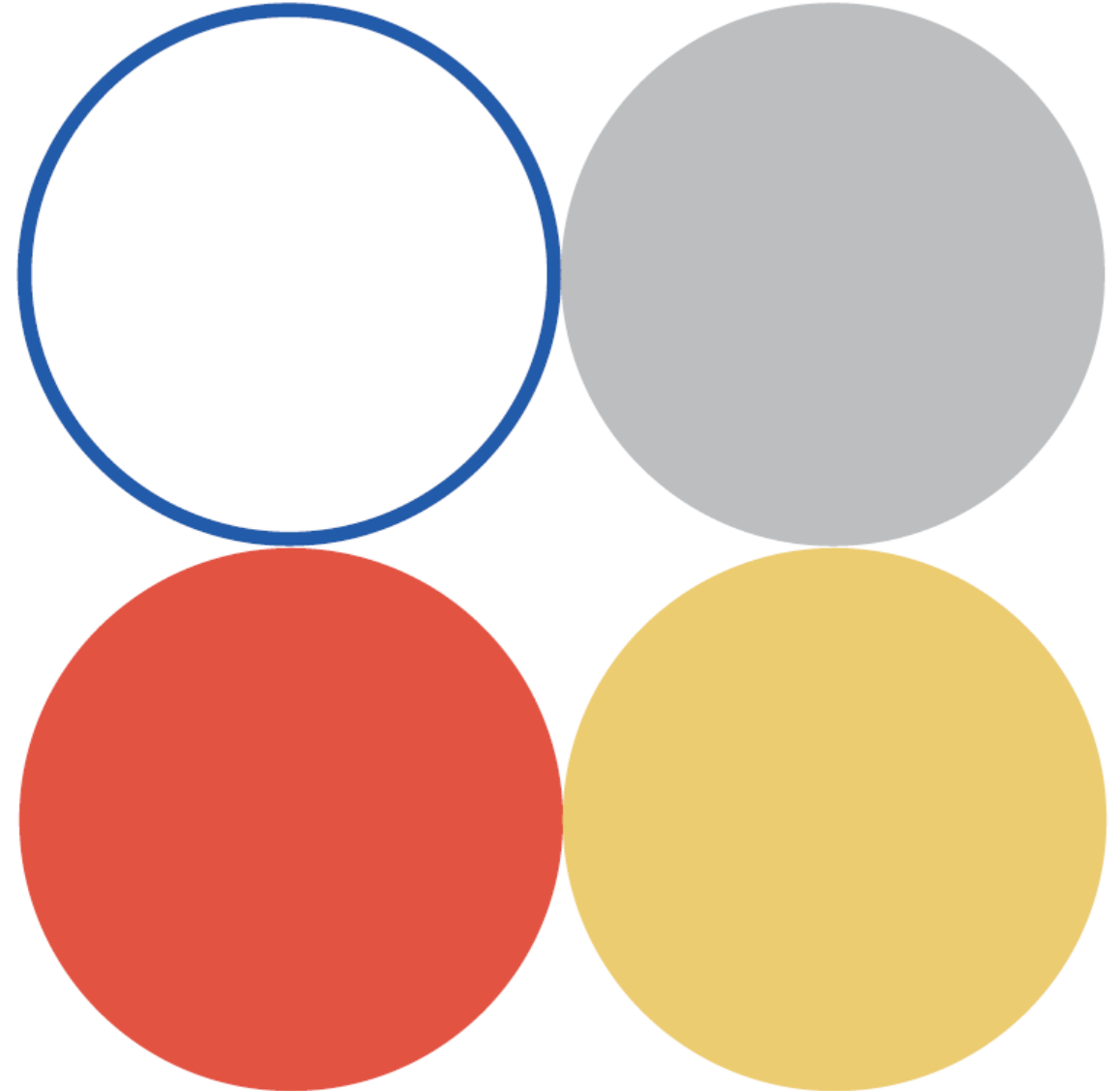


Aging & Thriving In the 21st Century

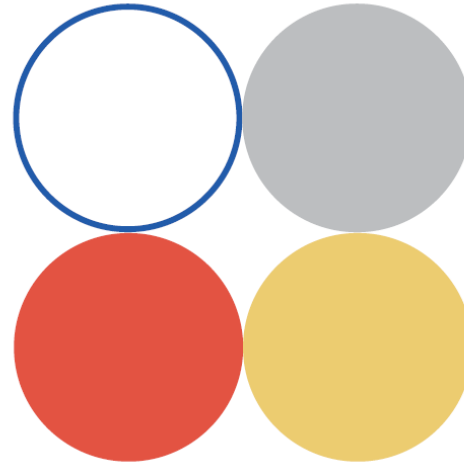
A Scan and Selective Systems Analysis of Issues, Trends,
and Innovations Vital to Older Adults in Canada



“Learning without **LEARNING** action is selfishness.”

Aging & Thriving In the 21st Century

A Scan and Selective Systems Analysis of Issues, Trends,
and Innovations Vital to Older Adults in Canada



James Stauch Institute for Community Prosperity Mount Royal University
November, 2021

SYSTEMS THINKING

“[An approach] which focuses on recognizing the interconnections between the parts of a system and synthesizing them into a unified view of the whole.”

- Colleen Lannon, *A Vocabulary of Systems Thinking: A Pocket Guide*. Leverage Networks Inc., 2018.

SOCIAL PROBLEMS

“A social condition or pattern of behaviour that is believed to warrant public concern and collective action.”

- Tepperman, Lorne and Curtis, Josh. *Social Problems: A Canadian Perspective*. Oxford University Press, 2010.

TRANSFORMING
THE SYSTEM

ACTION

“Action without learning is ignorance.”



Institute for
Community Prosperity



05

Introduction

06 What is old age?

07

The Trends

- 07 Population Profile and Trends
- 08 Socio-economic Status
- 10 Aging and Indigenous People
- 10 Health
- 11 Housing
- 12 Housing the Elderly- Types and Terminology
- 13 Community and Lifestyle

15

The Issues

- 15 Loneliness and Social Isolation
- 16 Ageism
- 17 Purpose and Meaning
- 18 Long-term Care
- 22 Caregivers
- 26 Dementia

Table of Contents

27

The Innovations

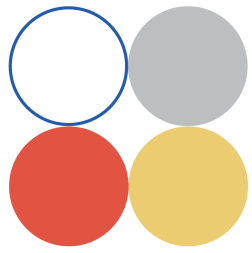
- 28 Key Players and Leverage Points
- 31 Proactive and Preventative Health Supports
- 32 Aging in Place & Age-Friendly Communities
- 25 Intergenerational Living and Empathy-Bridging
- 36 Age Tech

41

Final Thoughts

42

Endnotes

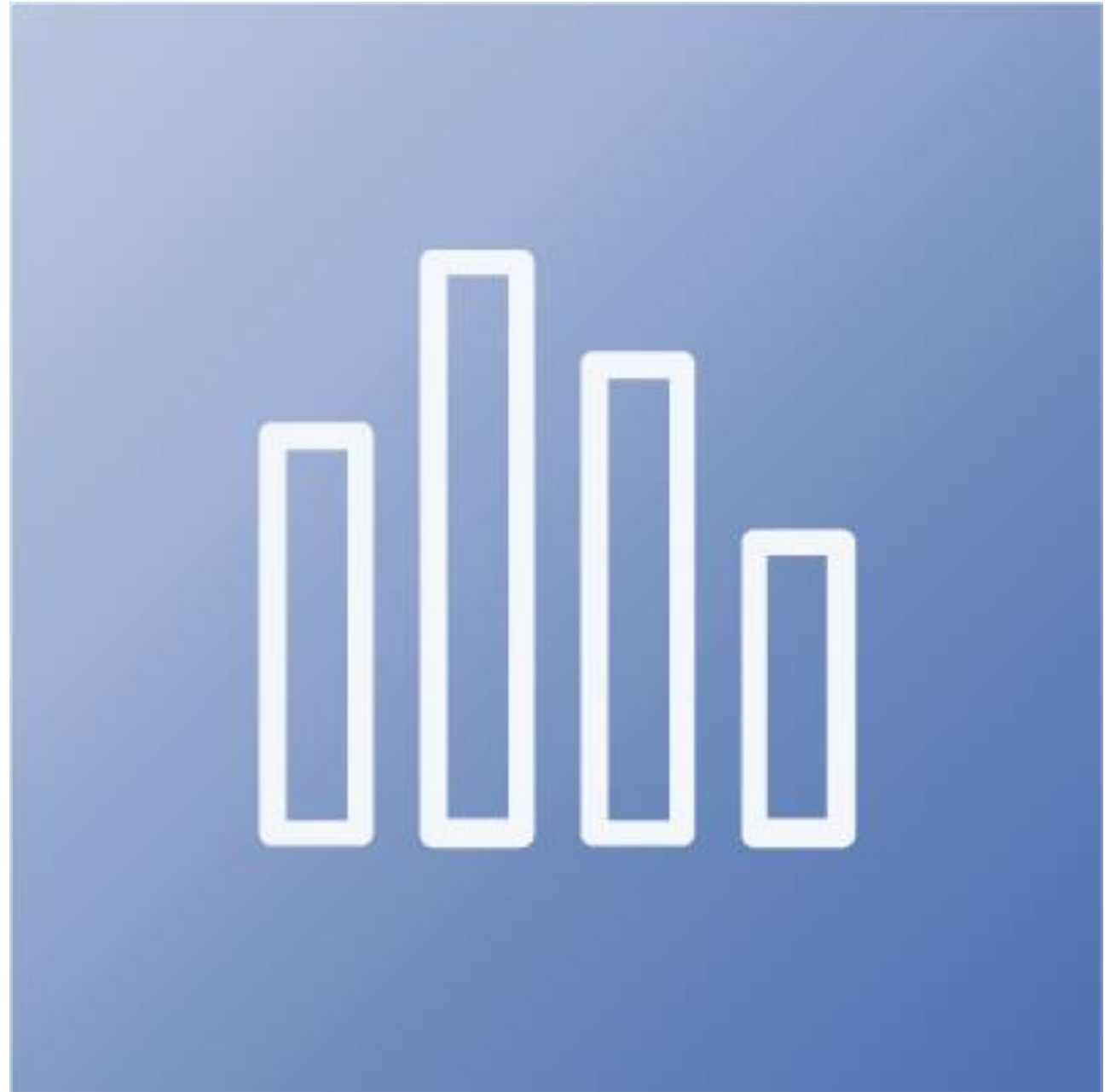


The Question

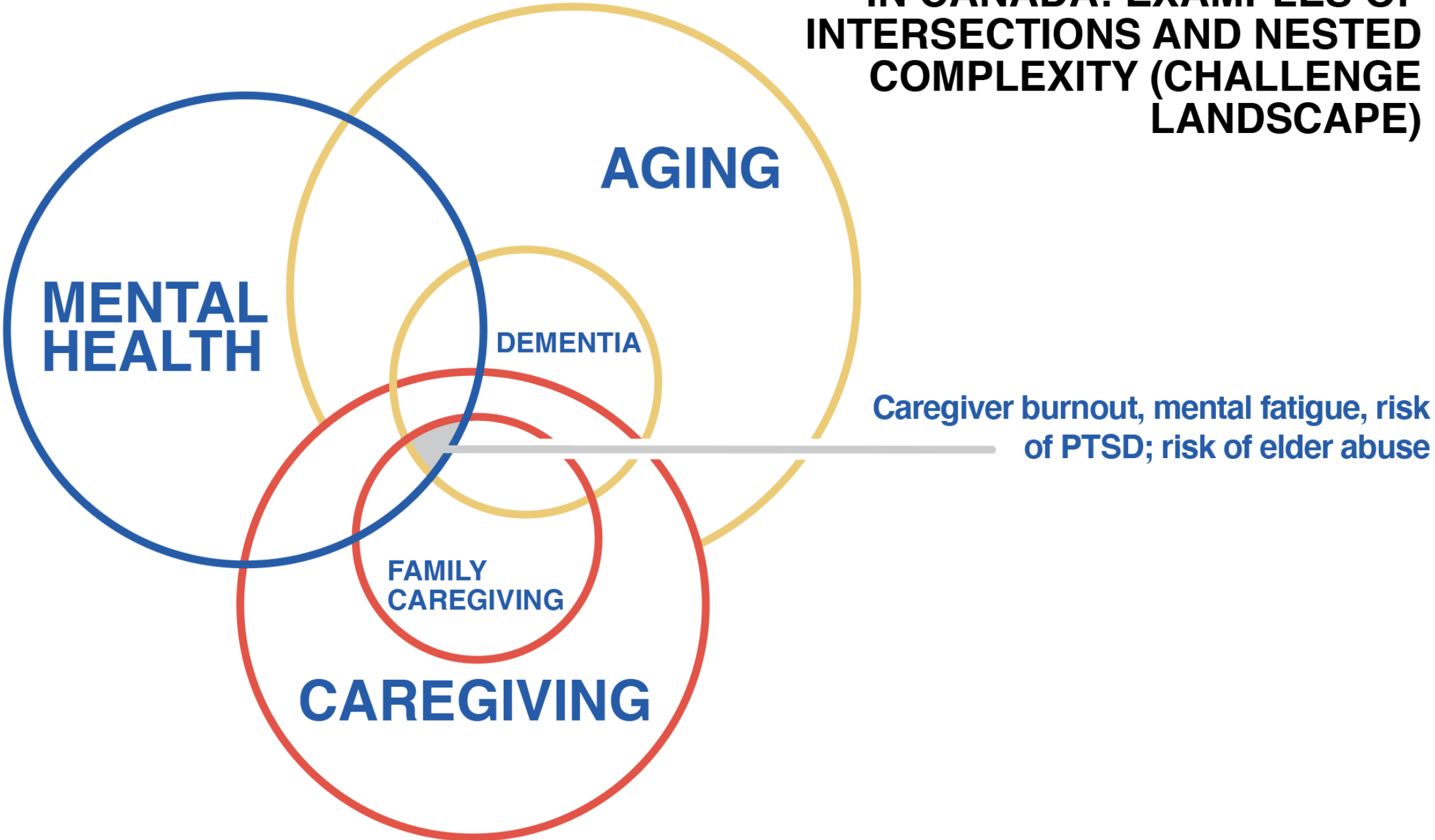
What factors are preventing older Canadians from flourishing, and how might we transform systems to maximize the choice, dignity, mobility, security, and trust accompanying an aging population transitioning into less autonomous living circumstances?



Poll

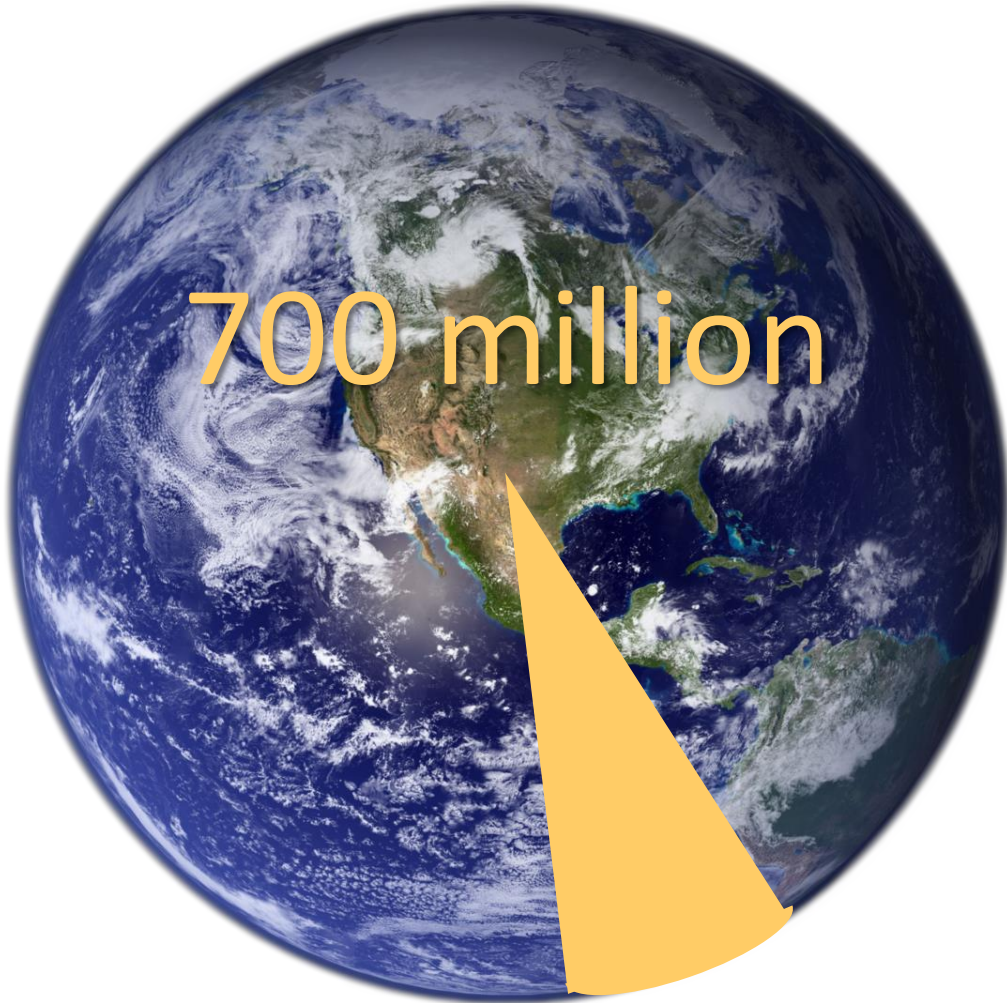


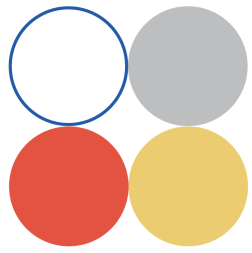
**SYSTEMS SNAPSHOT – AGING
IN CANADA: EXAMPLES OF
INTERSECTIONS AND NESTED
COMPLEXITY (CHALLENGE
LANDSCAPE)**



 **The Trends**

2050



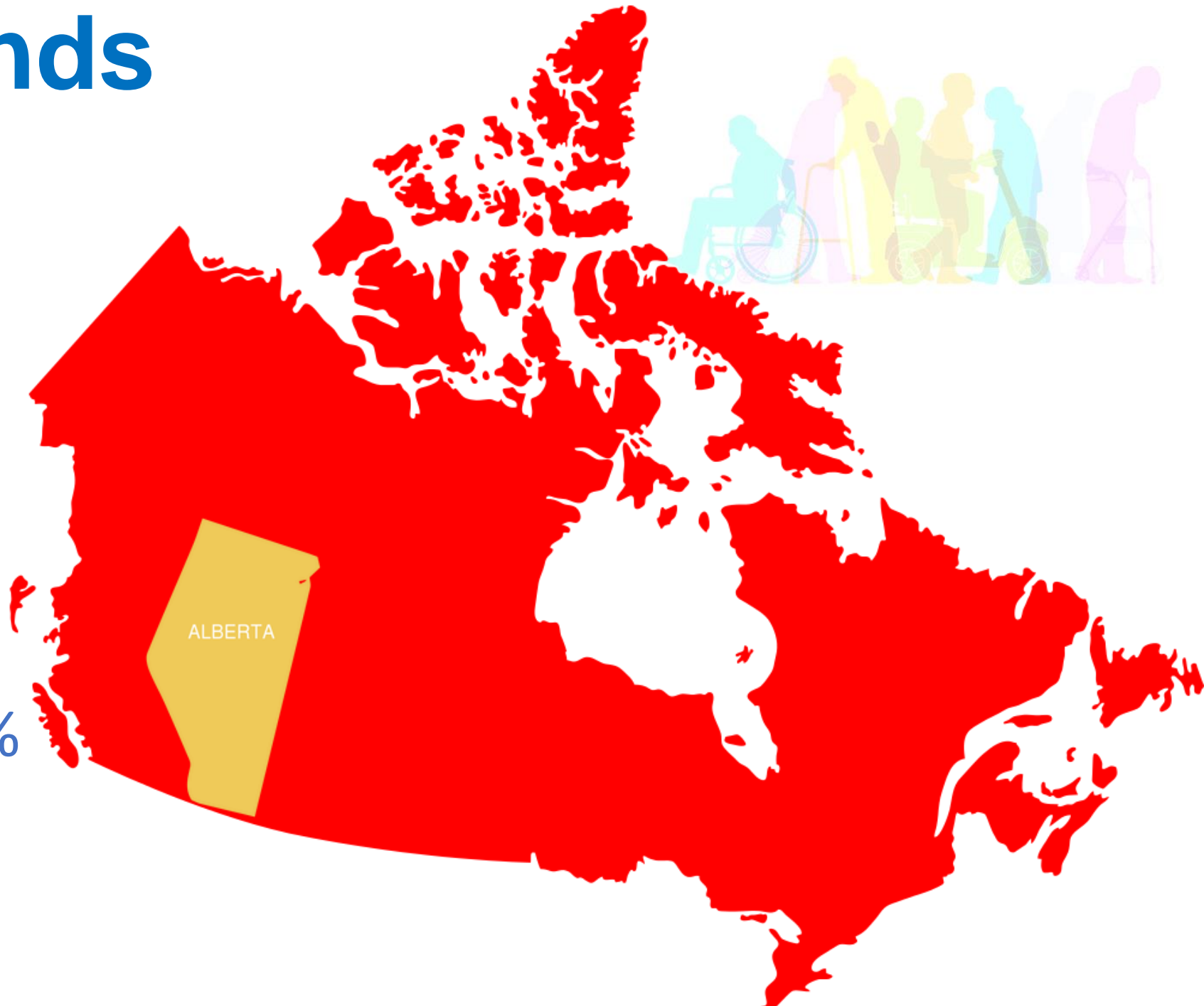


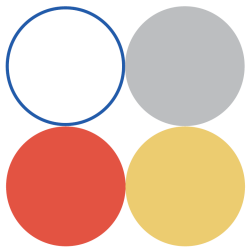
The Trends



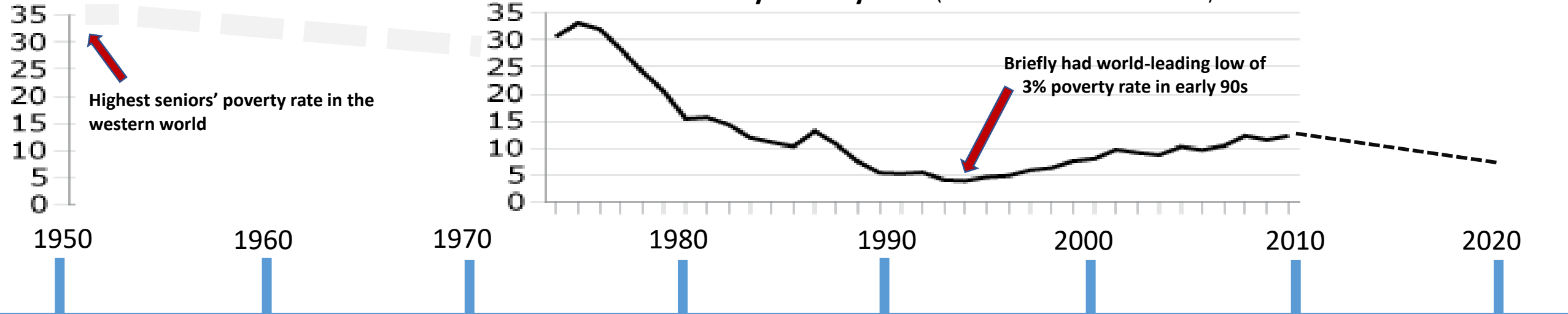
Alberta Seniors

- Lowest %
- Fastest growing %
- Greatest % in LTC





The Trends



Highest seniors' poverty rate in the western world

Briefly had world-leading low of 3% poverty rate in early 90s

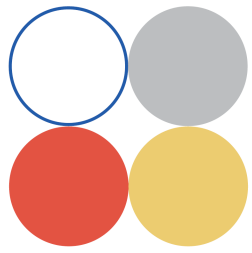
Old Age Security

Canada Pension Plan; Guaranteed Income Supplement

First cohort to receive full public pension turns 65

Chretien/Martin Austerity (+ Klein, Harris)

Fiscal stimulus + federal cabinet portfolio established for seniors



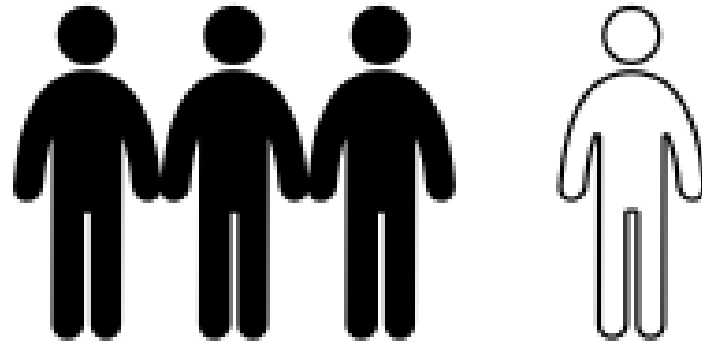
The Trends



PHOTO: James Stauch, Elders at Floe-Edge near Iqaluit, Nunavut



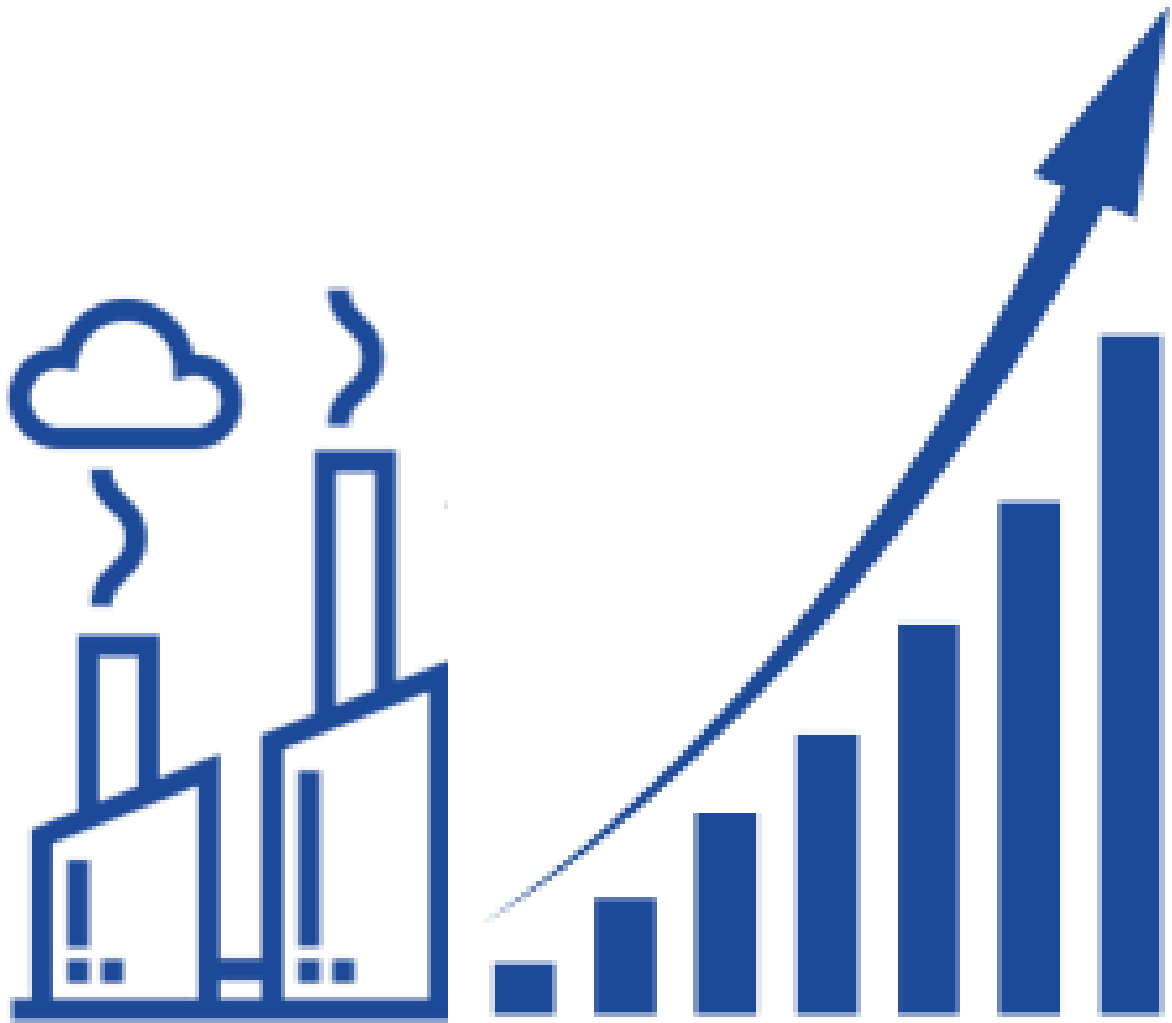
The Issues



Participation or **Isolation?**

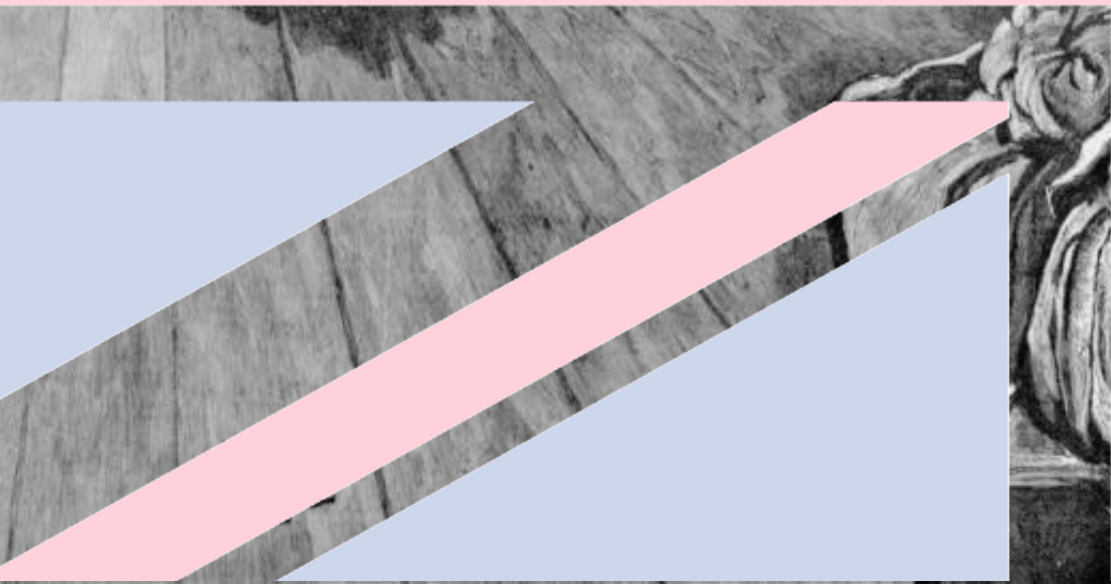
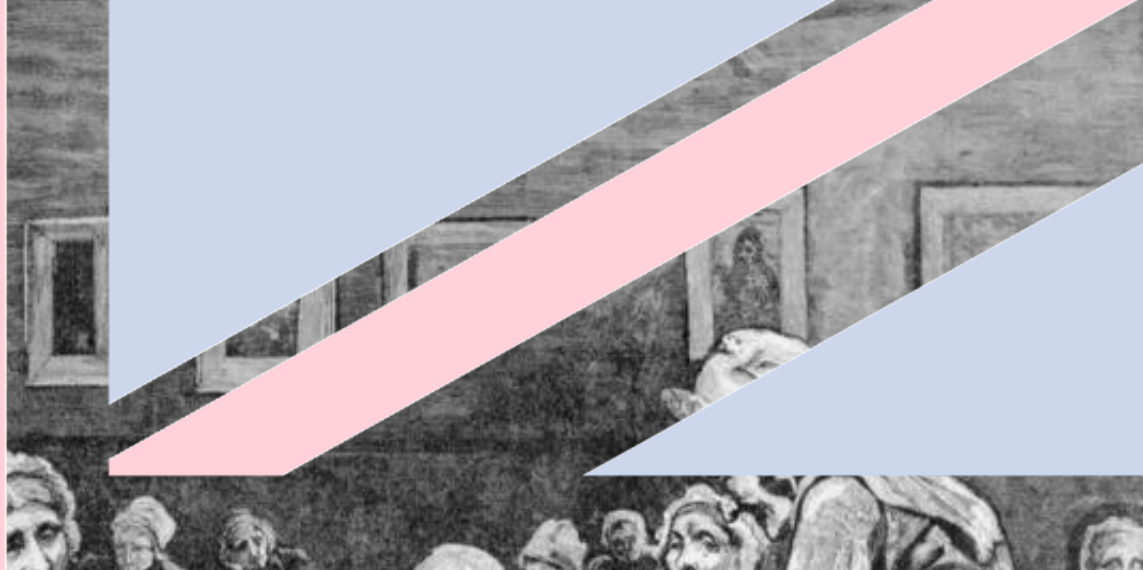


The Issues



Ageism







The Issues

Are we living longer or dying longer?



Purpose

The image features a stylized iceberg graphic. The top part, representing the visible tip, is yellow and contains a sun and mountains. The bottom part, representing the submerged base, is blue and contains a jagged mountain range. Three blue lines connect the submerged base to text boxes on the right. The text boxes are titled 'EVENT', 'PATTERN', 'INSTITUTIONAL BEHAVIOUR & STRUCTURES', and 'MENTAL MODELS & CULTURAL ASSUMPTIONS'.

SYSTEM SNAPSHOT – AN ‘ICEBERG’ VIEW OF LONG-TERM CARE

EVENT

Canadian Forces dispatched to long-term care facilities during COVID-19 first wave report that residents are dying in alarming numbers and that many of those still living are dwelling in deplorable conditions (unattended, dehydrated, disoriented, lying in their own urine/feces, etc.)

PATTERN

- Over 80% of first wave COVID-19 deaths were in long-term care facilities, by far the highest rate among OECD countries
- 27% of infected residents in LTC have died of COVID-19 (over 15,000 residence to date)
- Intensified social isolation, a major determinant of health

INSTITUTIONAL BEHAVIOUR & STRUCTURES

- Accountability gap (governments failed to act on over 150 commissioned reports and studies)
- Profit motivation of commercial LTC can lead to corner-cutting
- Non-profit LTC lacking financial flexibility to respond nimbly to emergencies
- Constitutional division of powers creates jurisdictional confusion

MENTAL MODELS & CULTURAL ASSUMPTIONS

- Systemic ageism
- Institutionalizing the ‘indigent’ (alms-based and ‘out of sight, out of mind’)
- ‘Social contract’ that preferences personal responsibility over societal responsibility

EVENT

Canadian Forces dispatched to long-term care facilities during COVID-19 first wave report that residents are dying in alarming numbers and that many of those still living are dwelling in deplorable conditions (unattended, dehydrated, disoriented, lying in their own urine/feces, etc.)

PATTERN

- Over 80% of first wave COVID-19 deaths were in long-term care facilities, by far the highest rate among OECD countries
- 27% of infected residents in LTC have died of COVID-19 (over 15,000 residence to date)
- Intensified social isolation, a major determinant of health

SYSTEM SNAPSHOT – AN ‘ICEBERG’ VIEW OF LONG-TERM CARE

PRACTISES

- Overcrowded facilities (as many as four to a room)
- Overworked, underpaid and undertrained staff (often working multiple shifts at different facilities, spreading the virus in the process)
- Lack of PPE (prioritized for hospitals) and poor infection control
- Lax regulatory oversight and spotty inspection
- Inconsistent procedures and preparedness across facilities

POLICIES

- Patchwork of provincial regulatory regimes
- Low public expenditure (1.3% of GDP in Canada compared with OECD average of 1.7%)
- Lack of public home care alternatives (Canada spends only 0.2% of GDP on home care, the second lowest allocation in the OECD)
- Voluntary accreditation of LTC facilities
- Lack of certified training or rigorous standards for paid caregivers

EVENT

Canadian Forces dispatched to long-term care facilities during COVID-19 first wave report that residents are dying in alarming numbers and that many of those still living are dwelling in deplorable conditions (unattended, dehydrated, disoriented, lying in their own urine/feces, etc.)

PATTERN

- Over 80% of first wave COVID-19 deaths were in long-term care facilities, by far the highest rate among OECD countries
- 27% of infected residents in LTC have died of COVID-19 (over 15,000 residence to date)
- Intensified social isolation, a major determinant of health

INSTITUTIONAL BEHAVIOUR & STRUCTURES

- Accountability gap (governments failed to act on over 150 commissioned reports and studies)
- Profit motivation of commercial LTC can lead to corner-cutting
- Non-profit LTC lacking financial flexibility to respond nimbly to emergencies
- Constitutional division of powers creates jurisdictional confusion

MENTAL MODELS & CULTURAL ASSUMPTIONS

- Systemic ageism
- Institutionalizing the 'indigent' (alms-based and 'out of sight, out of mind')
- 'Social contract' that preferences personal responsibility over societal responsibility

SYSTEMS SNAPSHOT – CAREER (DIS)EMPOWERMENT JOURNEY MAP OF A PERSONAL SUPPORT WORKER

Note: This snapshot typifies the experience of a worker in either a commercial, private long-term care

TO PURSUE A READILY AVAILABLE VOCATION

(DUE TO EXCLUSION FROM MUCH OF THE LABOUR MARKET AND HIGH DEMAND FOR WORKERS)

Origins & Identity

Education / Training

Employer Status

Working Conditions

TO SEEK FAIRER OUTCOMES FROM EMPLOYER

Support

Agency & Influence

TO PURSUE A READILY AVAILABLE VOCATION

(DUE TO EXCLUSION FROM MUCH OF THE LABOUR MARKET AND HIGH DEMAND FOR WORKERS)

Origins & Identity

90% female
Large proportion racialized minority

Most workers are recent immigrants or temporary migrants

START

TO BE CERTIFIED TO WORK IN LTC OR HOME CARE

Education / Training

Private colleges are unaccredited
No standardized certification & no common nomenclature for PSW work

For homecare PSWs:
Foreign accreditation either not recognized or work is tied to single employer

TO ADDRESS SYSTEMIC EXCLUSION

Little support to process, grieve, etc.
Support networks and philanthropy more focused on family caregivers

Migrant workers tied to single employer (which prevents them from quitting or complaining)

Low levels of unionization and alleged union-busting

Outsourcing



SYSTEMS SNAPSHOT – CAREER (DIS)EMPOWERMENT JOURNEY MAP OF A PERSONAL SUPPORT WORKER

Note: This snapshot typifies the experience of a worker in either a commercial, private long-term care or private homecare setting.

TO PURSUE A READILY AVAILABLE VOCATION

START

(DUE TO EXCLUSION FROM MUCH OF THE LABOUR MARKET AND HIGH DEMAND FOR WORKERS)

Origins & Identity

90% female
Large proportion racialized minority

Most workers are recent immigrants or temporary migrants

TO OFFSET PRECARIOUS EMPLOYMENT

Employment Status

- 1 in 5 are temporary jobs
- 45% are part-time or casual jobs
- Many workers work in more than one facility
- Wages are low relative to nature of the work
- Few or no benefits

TO ALLEVIATE POOR WORKING CONDITIONS

Working Conditions

Lower access to PPE, poorer infection control
Patients, who became close to PSWs, die regularly in these settings

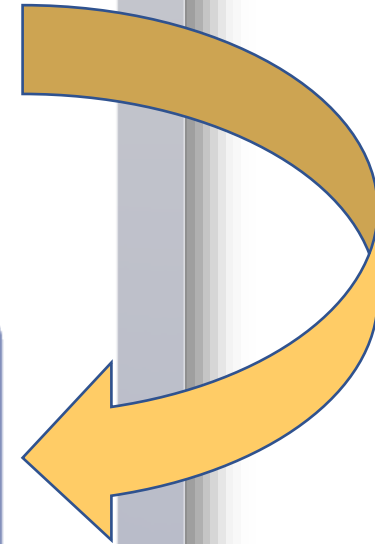
Both casual and institutional racism is common
Long shifts and unpaid hours

philanthropy more focused on family caregivers or complaining)

TO ADDRESS SYSTEMIC EXCLUSION

Agency & Influence

Low levels of unionization and alleged union-busting
Outsourcing



SYSTEMS SNAPSHOT – CAREER (DIS)EMPOWERMENT JOURNEY MAP OF A PERSONAL SUPPORT WORKER

Note: This snapshot typifies the experience of a worker in either a commercial, private long-term care or private homecare setting.

TO PURSUE A READILY AVAILABLE VOCATION **START**

(DUE TO EXCLUSION FROM MUCH OF THE LABOUR MARKET AND HIGH DEMAND FOR WORKERS)

Origins & Identity	90% female Large proportion racialized minority	Most workers are recent immigrants or temporary migrants
-------------------------------	--	--

TO BE CERTIFIED TO WORK IN LTC OR HOME CARE

Education / Training	Private colleges are unaccredited No standardized certification & no common nomenclature	For homecare PSWs: Foreign accreditation either not recognized or work is tied to single employer
-----------------------------	---	--

TO OFFSET

TO SEEK FAIRER OUTCOMES FROM EMPLOYER

Support

Little support to process, grieve, etc. Support networks and philanthropy more focused on family caregivers	Migrant workers tied to single employer (which prevents them from quitting or complaining)
--	--

TO ADDRESS SYSTEMIC EXCLUSION

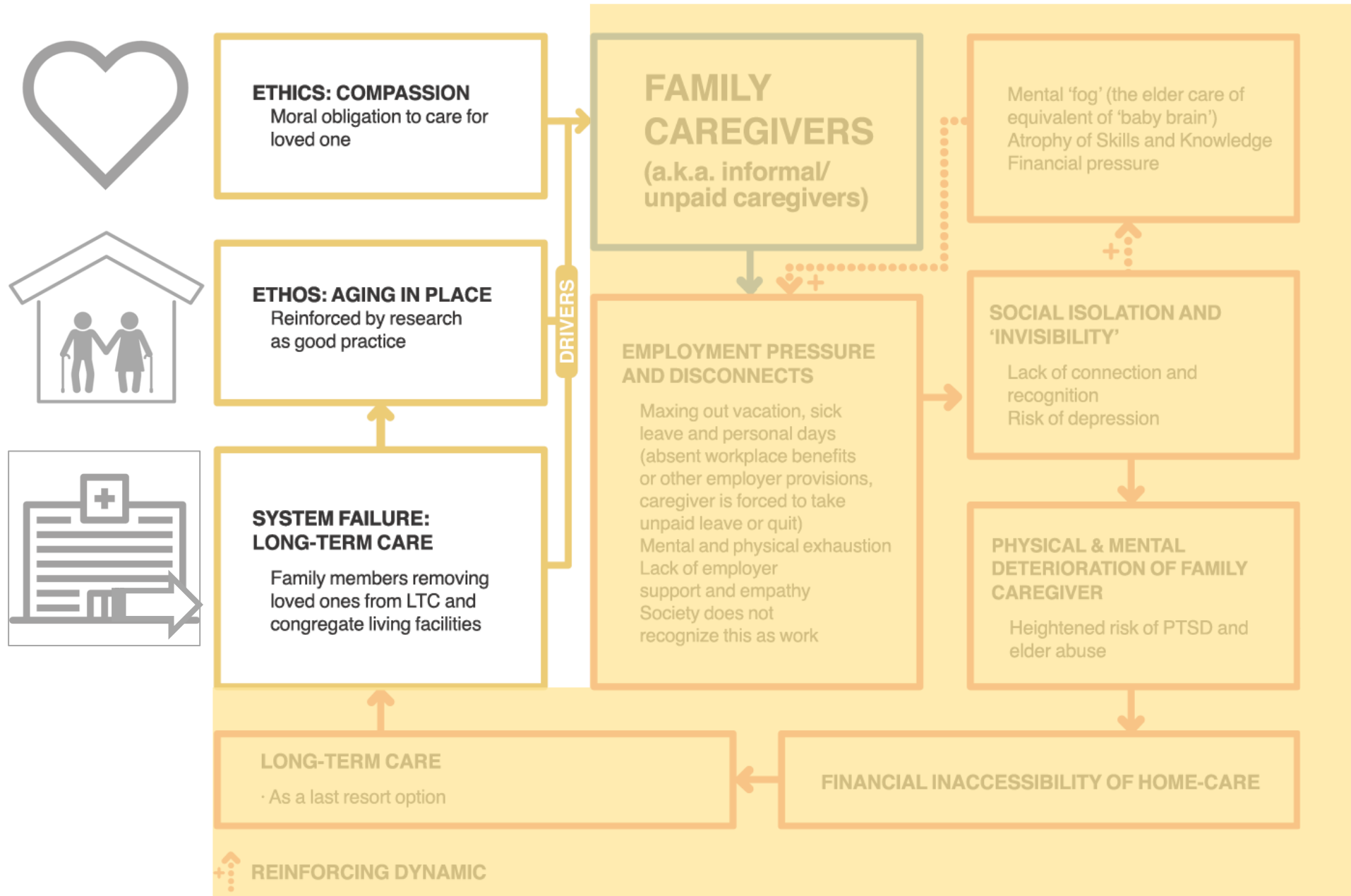
Agency & Influence

Low levels of unionization and alleged union-busting	Outsourcing
--	-------------

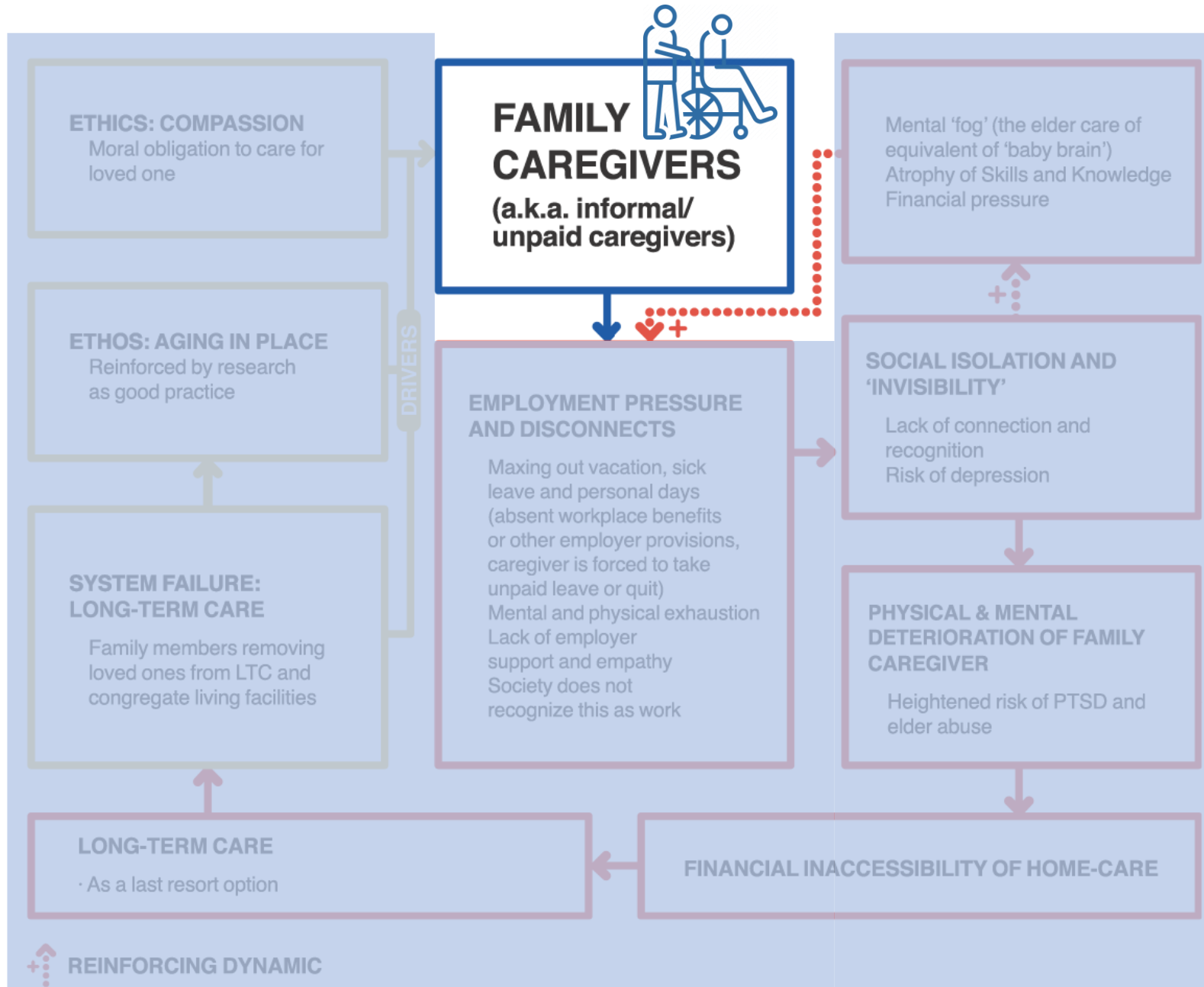
Agency & Influence

Low levels of unionization and alleged union-busting	Outsourcing
--	-------------

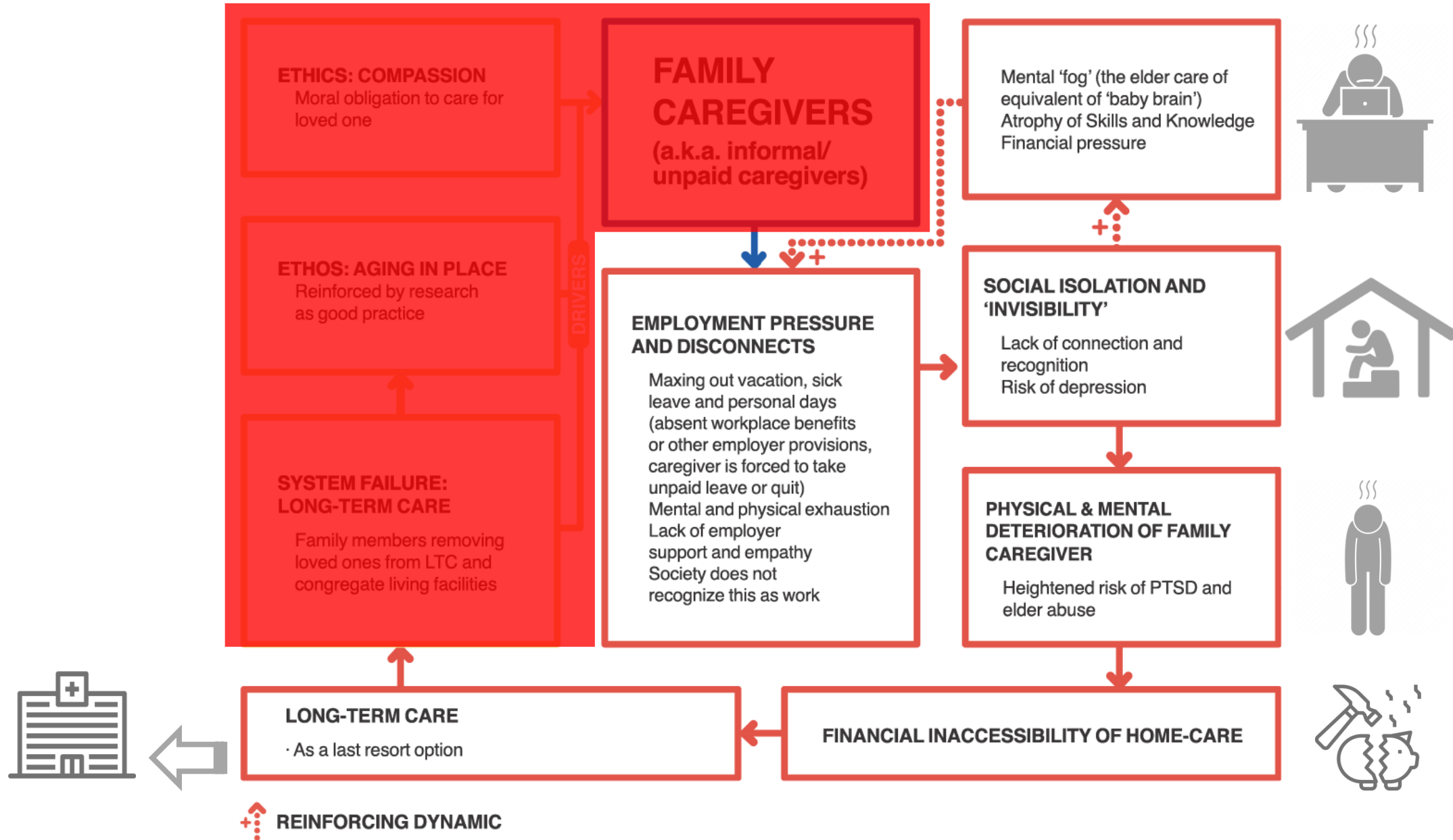
SYSTEMS SNAPSHOT – INFLUENCE DYNAMICS IN FAMILY CAREGIVING CHOICES

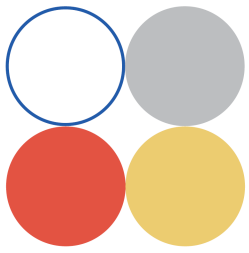


SYSTEMS SNAPSHOT – INFLUENCE DYNAMICS IN FAMILY CAREGIVING CHOICES

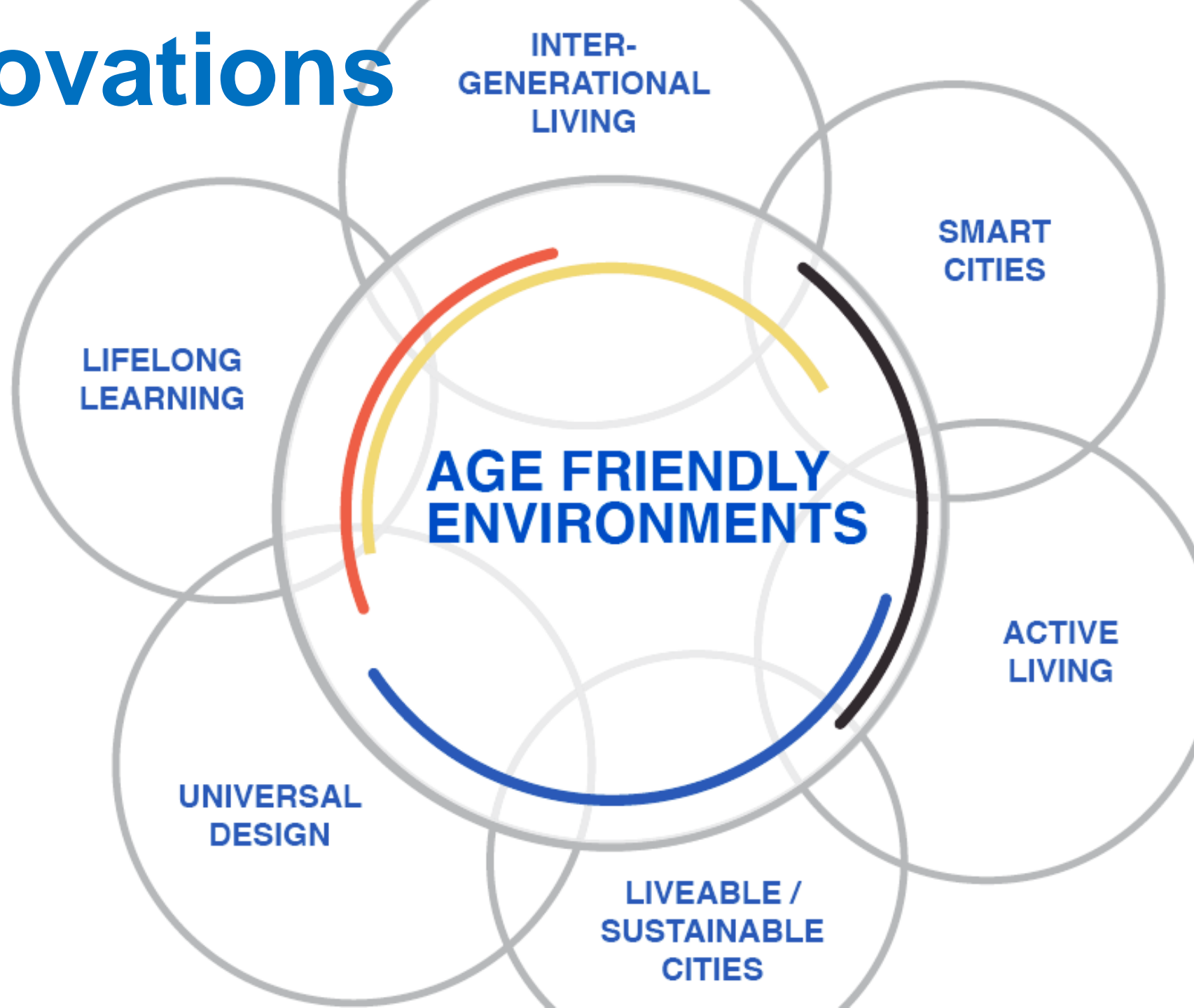


SYSTEMS SNAPSHOT – INFLUENCE DYNAMICS IN FAMILY CAREGIVING CHOICES

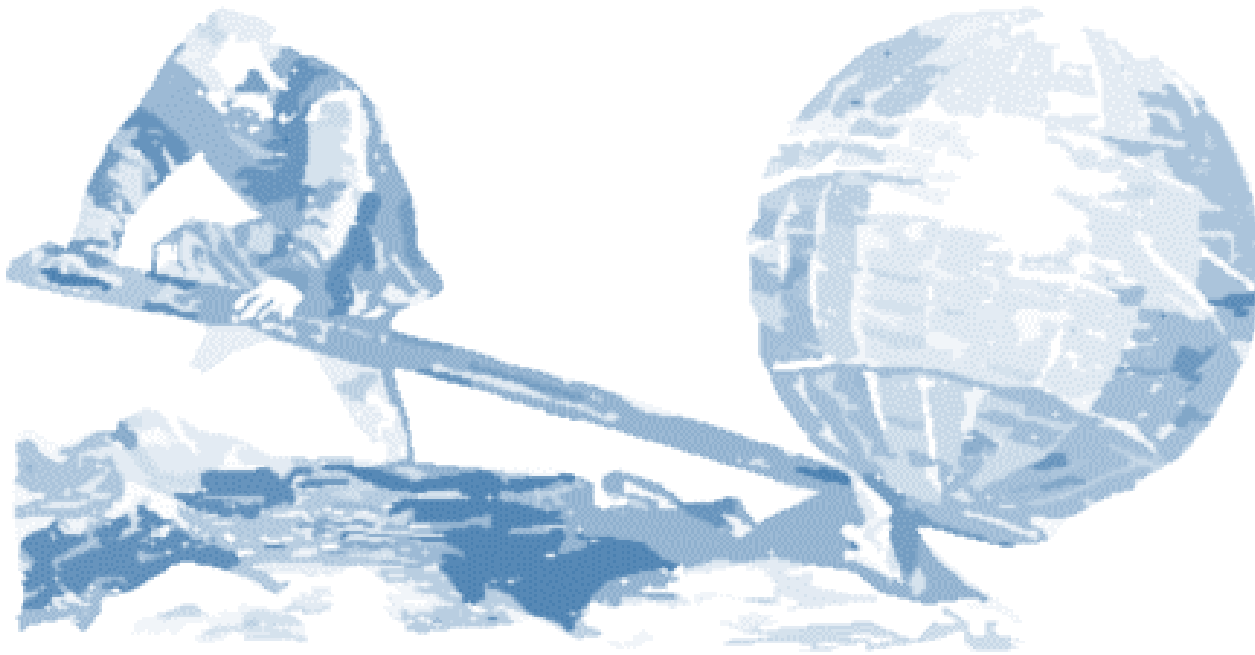
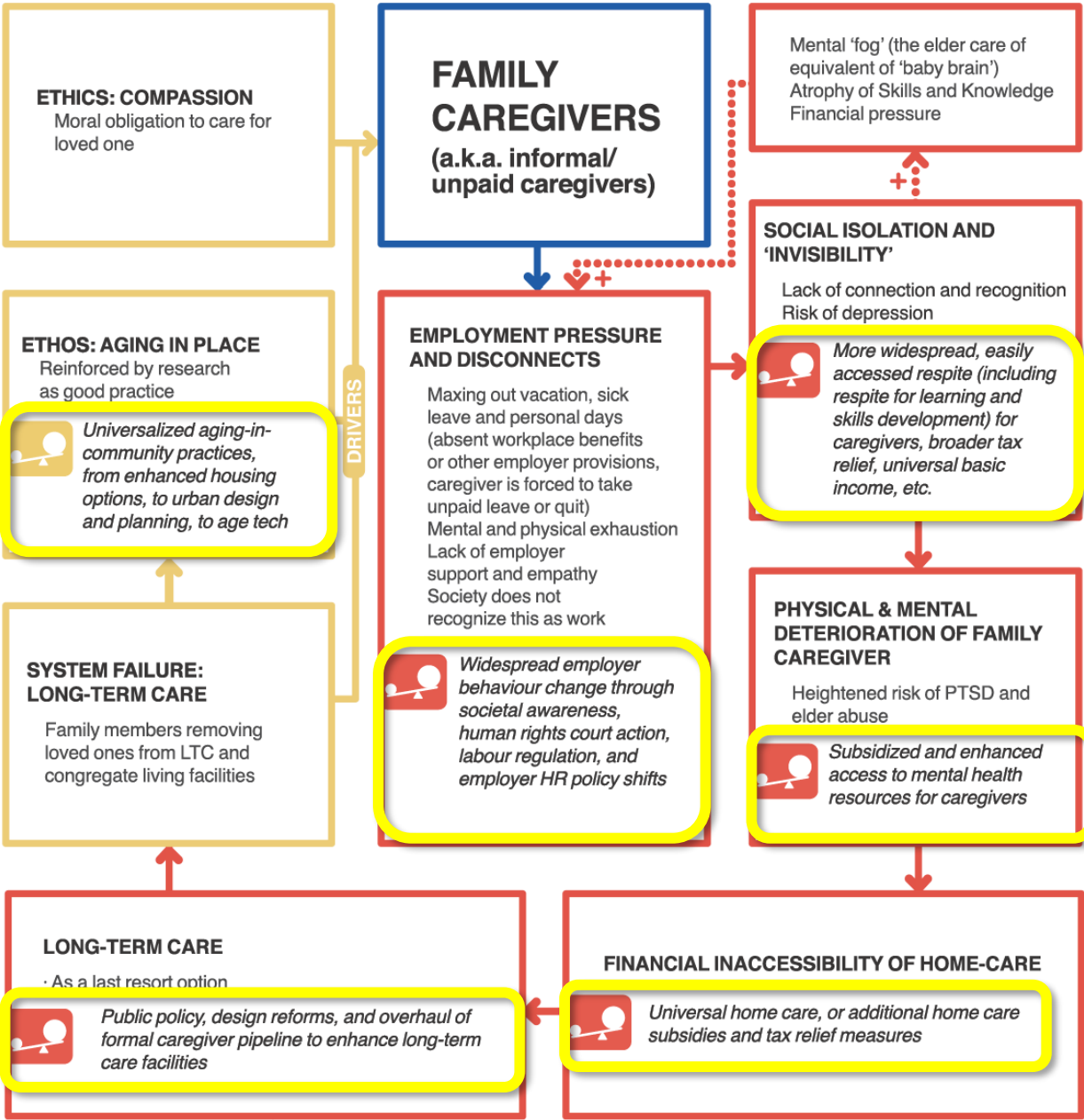




The Innovations

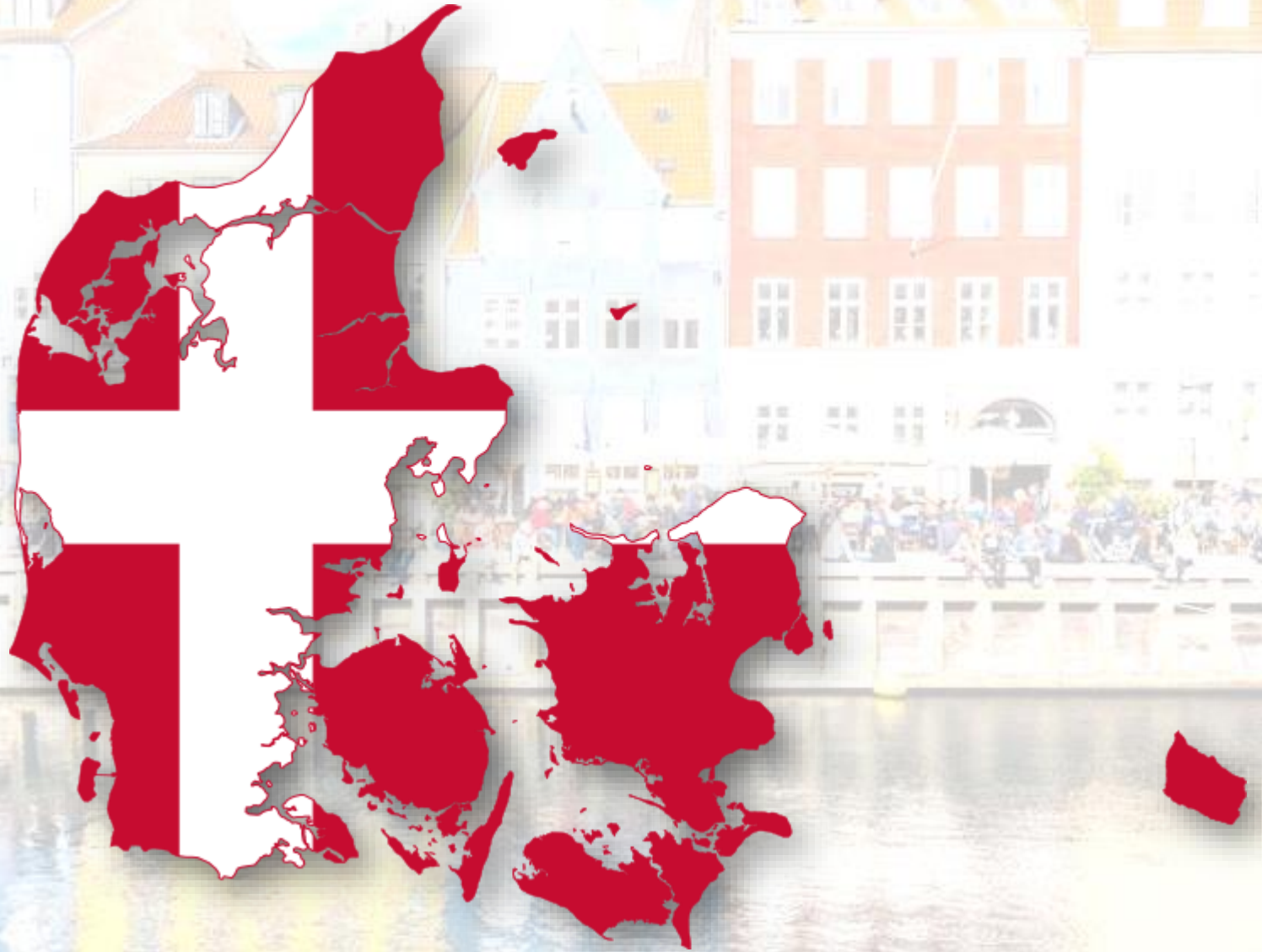


SYSTEMS SNAPSHOT – INFLUENCE DYNAMICS IN FAMILY CAREGIVING CHOICES (WITH LEVERAGE POINTS IDENTIFIED)



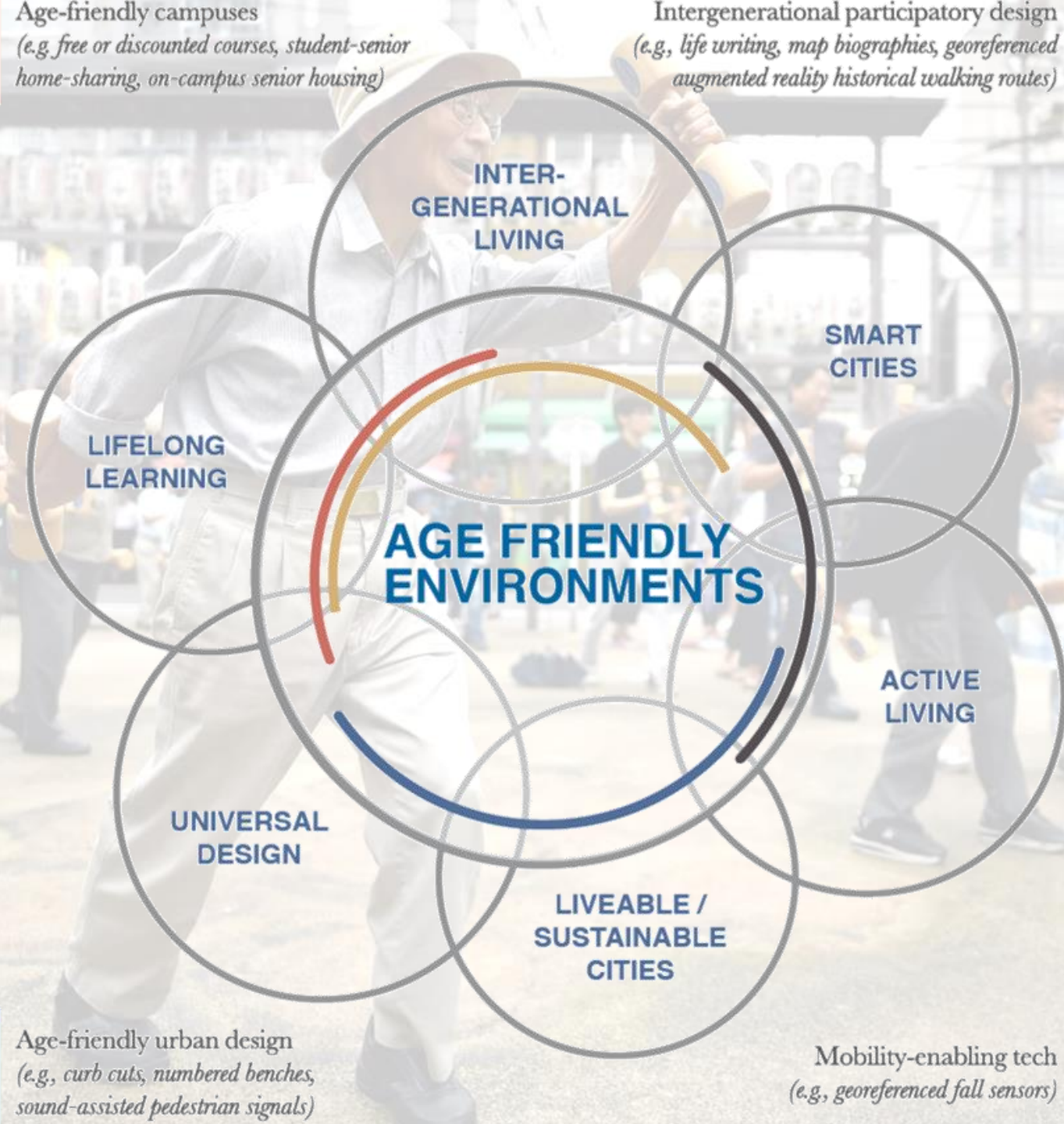


The Innovations



Age-friendly campuses
(e.g. free or discounted courses, student-senior home-sharing, on-campus senior housing)

Intergenerational participatory design
(e.g., life writing, map biographies, georeferenced augmented reality historical walking routes)

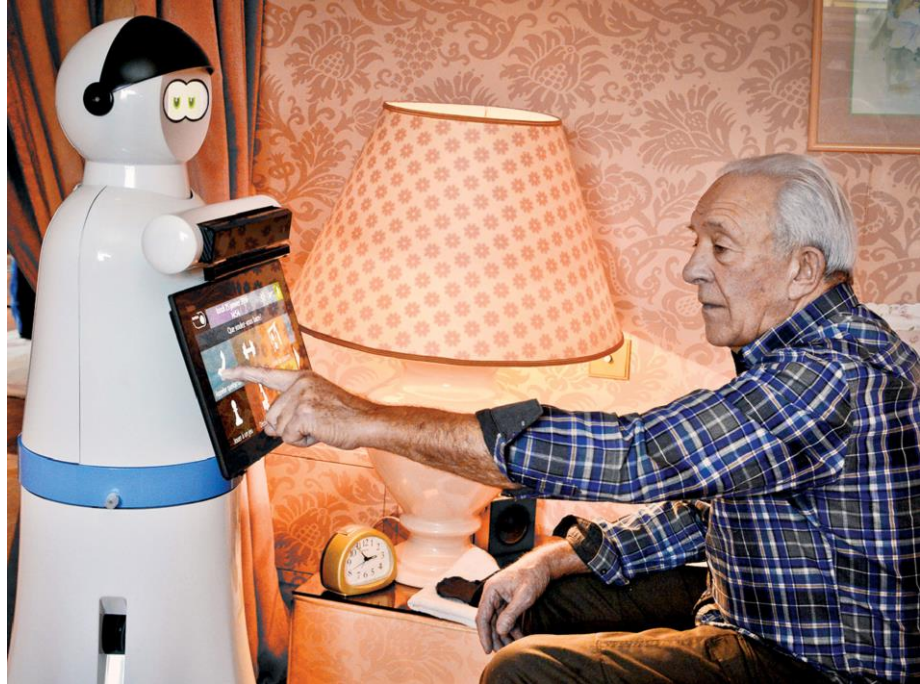


Age-friendly urban design
(e.g., curb cuts, numbered benches, sound-assisted pedestrian signals)

Mobility-enabling tech
(e.g., georeferenced fall sensors)



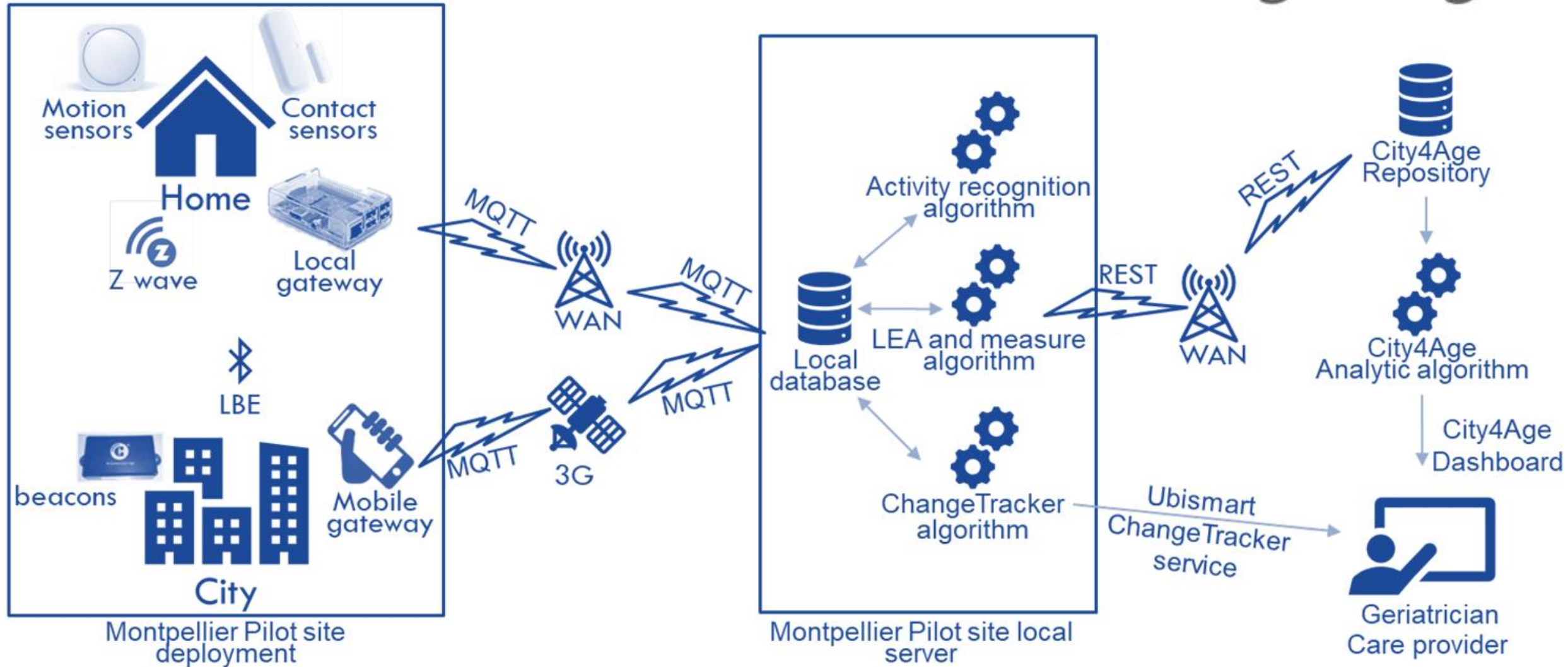
Age Tech

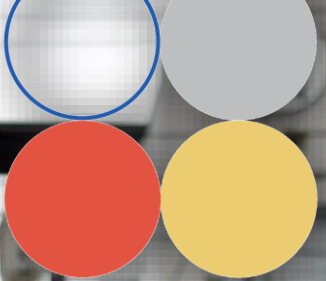


BEHAVIORAL MARKERS THAT ARE EXTRACTED FROM SENSOR DATA²⁵²

Category	Features
Mobility	Step count, walking speed, step length, daily distance covered, number and duration of times in one spot, number walking bouts, activity level
Exercise	Number, duration, movement types, intensity, location
Sleep	Number and duration of daily sleep bouts, sleep times, sleep locations, sleep fitfulness, sleep interruptions, sleep apnea
Activity	Number, duration, and location of basic and instrumental activities of daily living
Environment	Frequented locations with type, outdoor walkability score, indoor and outdoor air quality, temperature, light levels, sound levels, number of residents, environment clutter

City4Age

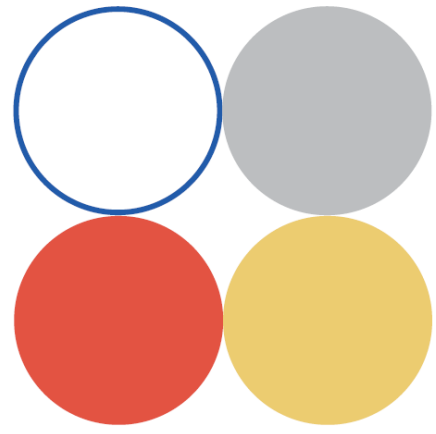




Final Thoughts

Aging & Thriving In the 21st Century

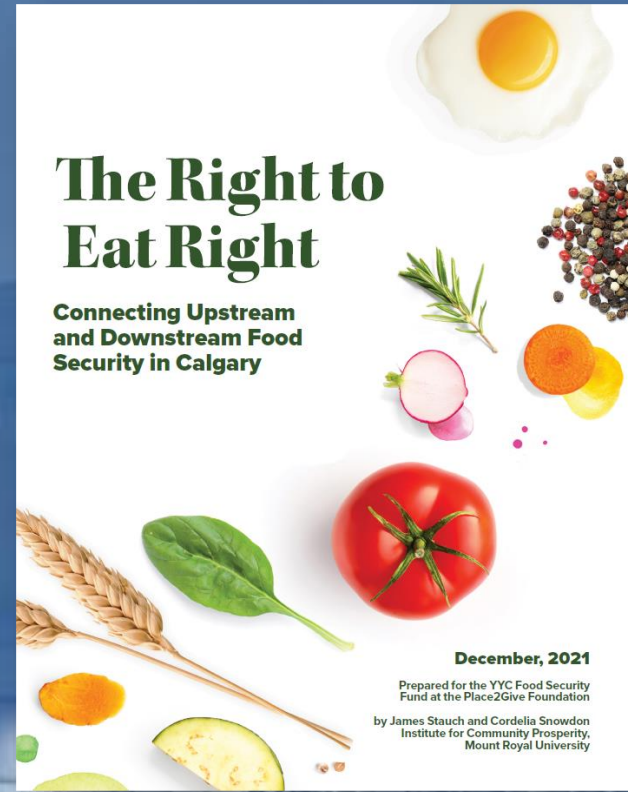
A Scan and Selective Systems Analysis of Issues, Trends,
and Innovations Vital to Older Adults in Canada



James Stauch Institute for Community Prosperity Mount Royal University
November, 2021

The Right to Eat Right

Connecting Upstream and Downstream Food Security in Calgary



December, 2021

Prepared for the YYC Food Security Fund at the Place2Give Foundation
by James Stauch and Cordelia Snowden
Institute for Community Prosperity,
Mount Royal University

SH*T'S GETTING REAL

2022 ENVIRONMENTAL SCAN



Prepared for
Calgary Foundation
January, 2022

By James Stauch, with contributions
from Lataasha Calf Robe
Institute for Community Prosperity

MOUNT ROYAL
UNIVERSITY
1910

Institute for
Community Prosperity



WELLBEING
ECONOMY
ALLIANCE



James Stauch, Director
jstauch@mtroyal.ca
@CPMRU
mtroyal.ca/communityprosperity