

Welcome

HEALTHY AGING
CORE Collaborative Online
Resources & Education
ALBERTA

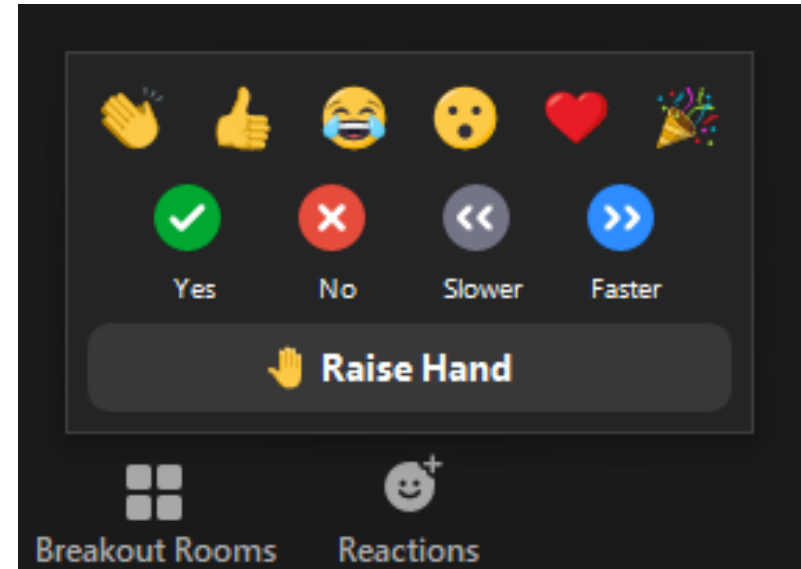
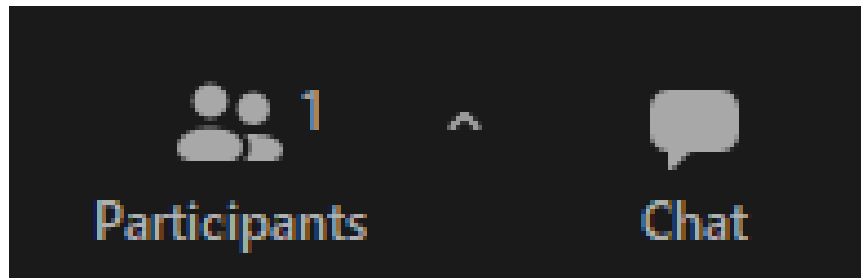
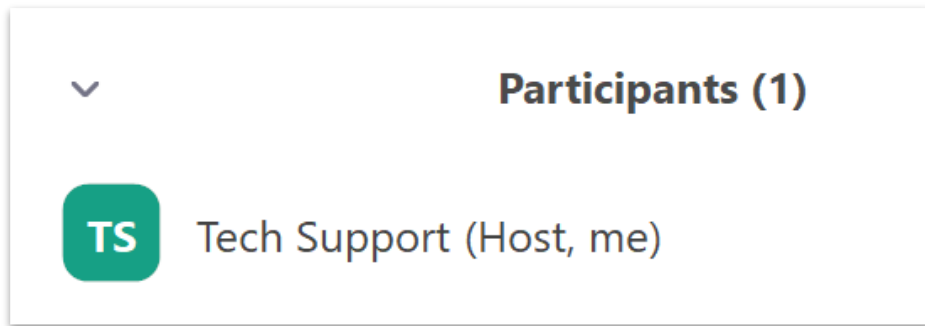
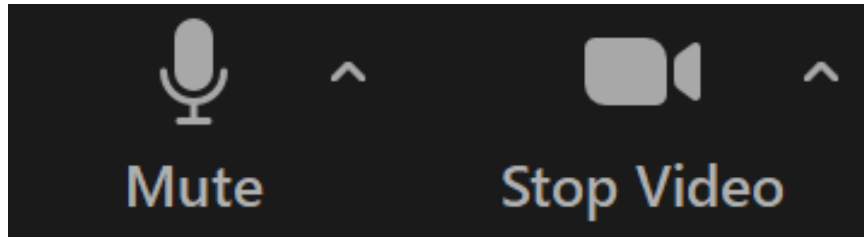
Age-Friendly Housing Series Session 2: Late Life Homelessness and Affordable Housing *March 23, 2022 - 10:30 AM-12 PM*



LAND ACKNOWLEDGEMENT

In the spirit of our journey to promote reconciliation, we would like to honour the truth of the shared history and acknowledge the many First Nations, Métis and Inuit who have lived in and cared for these lands for generations. We are grateful for the traditional Knowledge Keepers and Elders who are still with us today and those who have gone before us.

HOUSEKEEPING



This session will be recorded, and the slides will also be available.

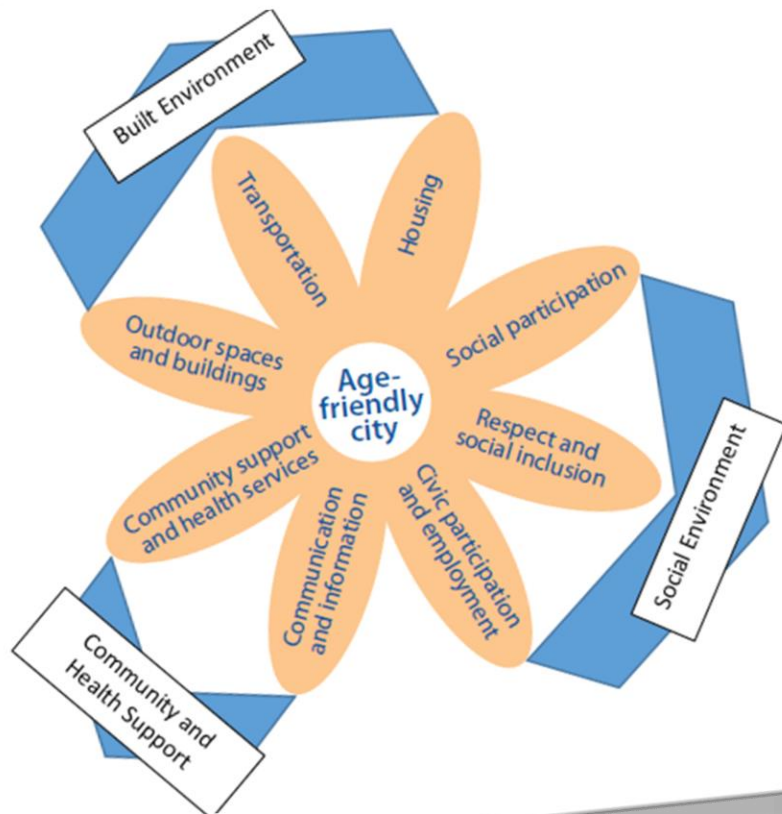
They will be uploaded on the CORE Alberta platform

<https://corealberta.ca/>

*“Design for the young and you exclude the old.
Design for the old and you include everyone.”*

~ The late Bernard Isaacs, Founding Director
Birmingham Centre for Applied Gerontology

What is Age-Friendly?



- Age-friendly is a model to enable active, healthy aging by focusing on eight domains of community living.
- Age-friendly communities help seniors remain engaged in their communities through the development of supportive built and social environments that facilitate exercise, social connection and respect for seniors.
- The cornerstone of the age-friendly model is the development of a community plan which brings together traditional and non-traditional partners to identify community assets and strengths that facilitate social inclusion of seniors and factors that hinder it.

Alberta Age-Friendly CORE Groups

Community of Practice

- Communities considering or pursuing an age-friendly plan
- Offer mentoring support
- Meets regularly
- Members actively support the Community of Practice.



Discussion Group

- Open to anyone
- Information sharing
- May or may not be involved in an age-friendly initiative.





Checklist of Essential Features of Age-friendly Cities

Housing

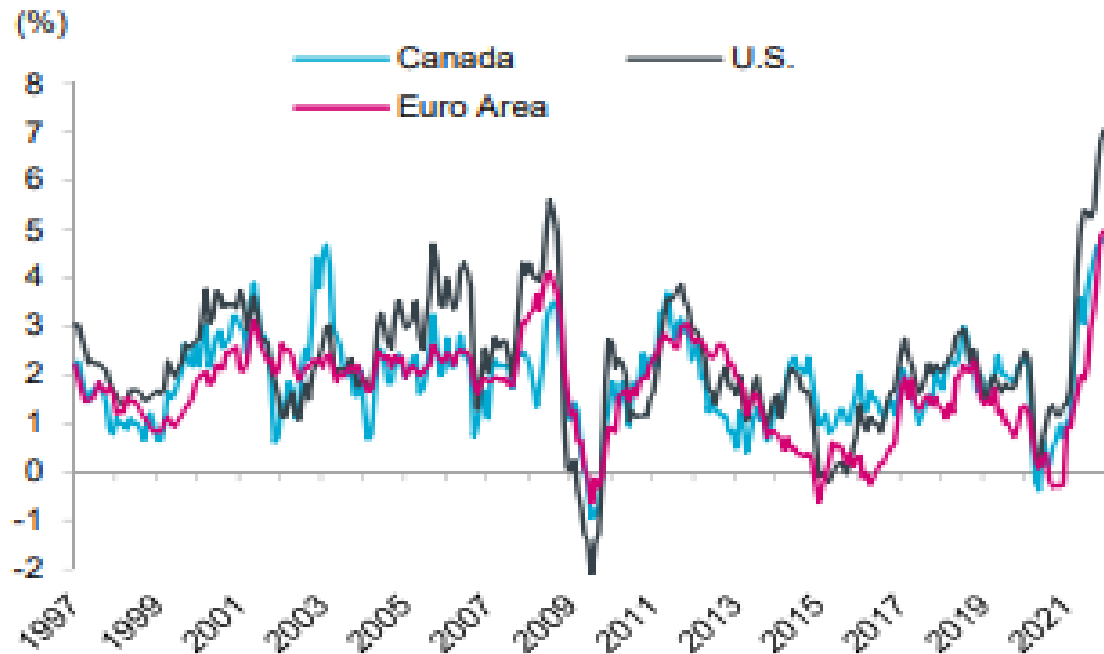
- Sufficient, affordable housing is available in areas that are safe and close to services and the rest of the community.
- Sufficient and affordable home maintenance and support services are available.
- Housing is well-constructed and provides safe and comfortable shelter from the weather.
- Interior spaces and level surfaces allow freedom of movement in all rooms and passageways.
- Home modification options and supplies are available and affordable, and providers understand the needs of older people.
- Public and commercial rental housing is clean, well-maintained and safe.
- Sufficient and affordable housing for frail and disabled older people, with appropriate services, is provided locally.

Age-Friendly Housing – Setting the Stage

- Most seniors want to remain in their own homes for as long as possible.
- Majority of Alberta seniors live in private dwellings.
- The majority of seniors in private dwellings are homeowners.
- While about 1 out of every 7 Alberta seniors in a private dwelling is a renter.
- Close to a quarter of Alberta seniors in private dwellings live alone.

Impact of Increased Cost of Living

CHART 3: CONSUMER INFLATION HAS RISEN SHARPLY
CPI inflation in select advanced economies



Sources: Statistics Canada, U.S. Bureau of Labor Statistics, Statistical Office of the European Communities and Haver Analytics

- There has been a strong spike in cost of living over the past 2 years
- The inflation rate has increased by 5% since the pandemic began
- Pandemic impact - caregivers may have lost jobs during pandemic therefore household income has decreased
- How does this impact housing for seniors?
 - Majority of seniors on fixed income
 - Seniors needing to look at different or creative housing options

**Age-Friendly Housing Series Session 2:
Late Life Homelessness and Affordable Housing**
March 23, 2022 - 10:30 AM-12 PM



The Alberta Age-Friendly
Community of Practice

Age-Friendly Housing Series:
From homelessness to continuing care

Agenda

- Welcome and session overview
- Presentations:
 - Late Life Homelessness
 - Emma Wallace Project Manager, Rural Development Network
 - Linda Bernicki, Director, Rural Development Network
 - Affordable Housing
 - Irene Martin-Lindsay, Executive Director, Alberta Seniors & Community Housing Association
- Question and Answer
- Wrap-up

Older Adult Homelessness & Housing Instability

March 2022



Land Acknowledgement



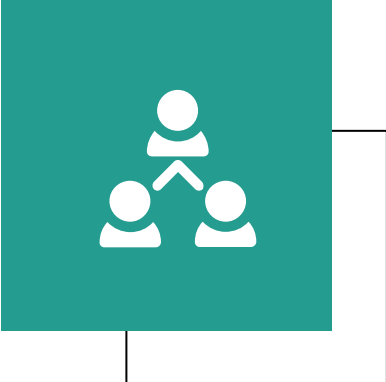
RURAL DEVELOPMENT NETWORK (RDN)

RDN is a not-for-profit group that offers community-social development services on a cost-recovery basis.

We provide:



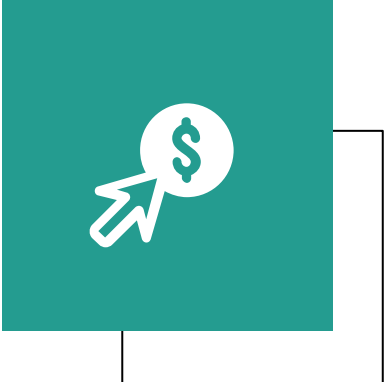
Innovative tools and resources



Expertise & capacity building

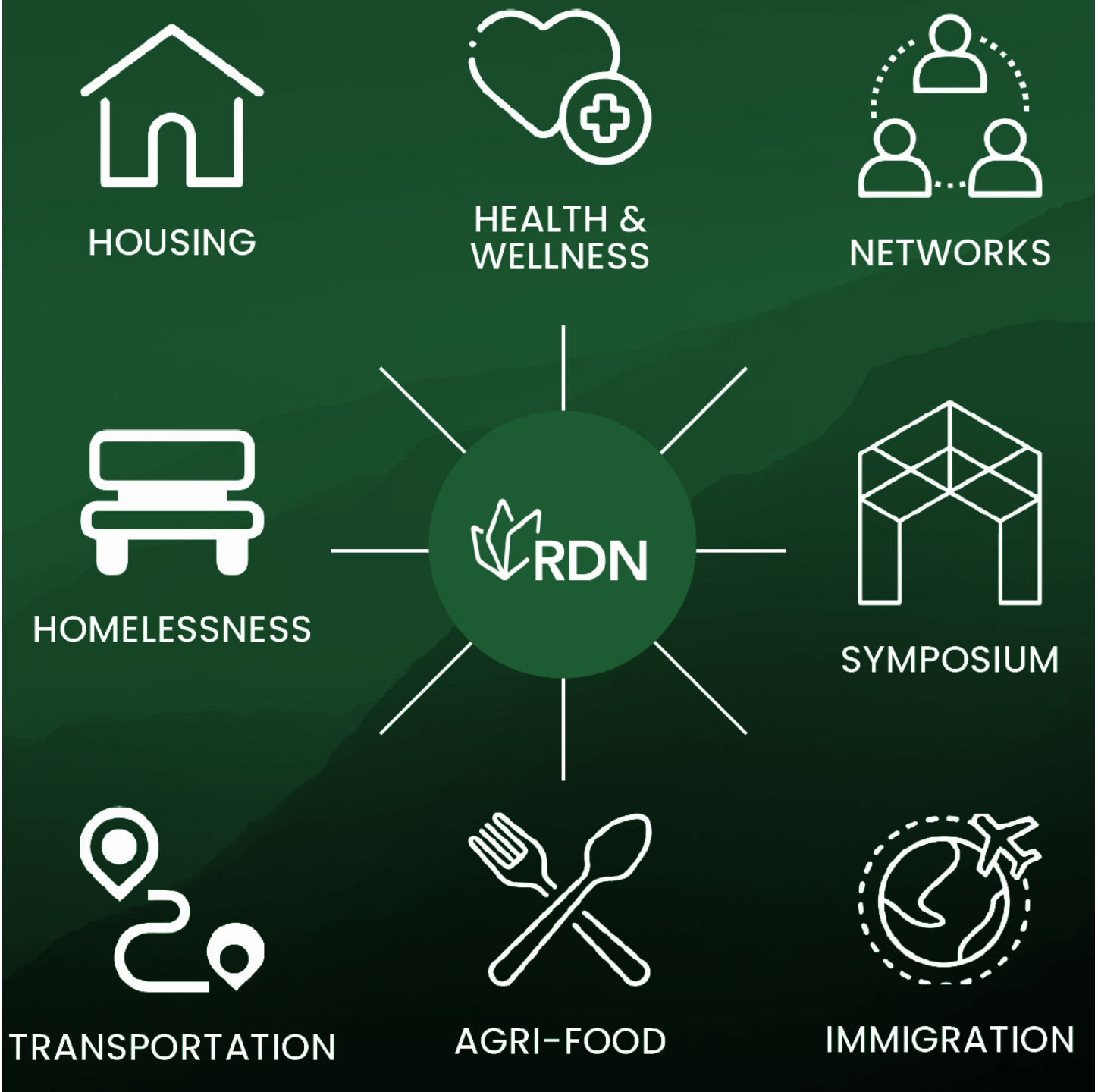


Advocate & amplify the rural voice



Help Access funding

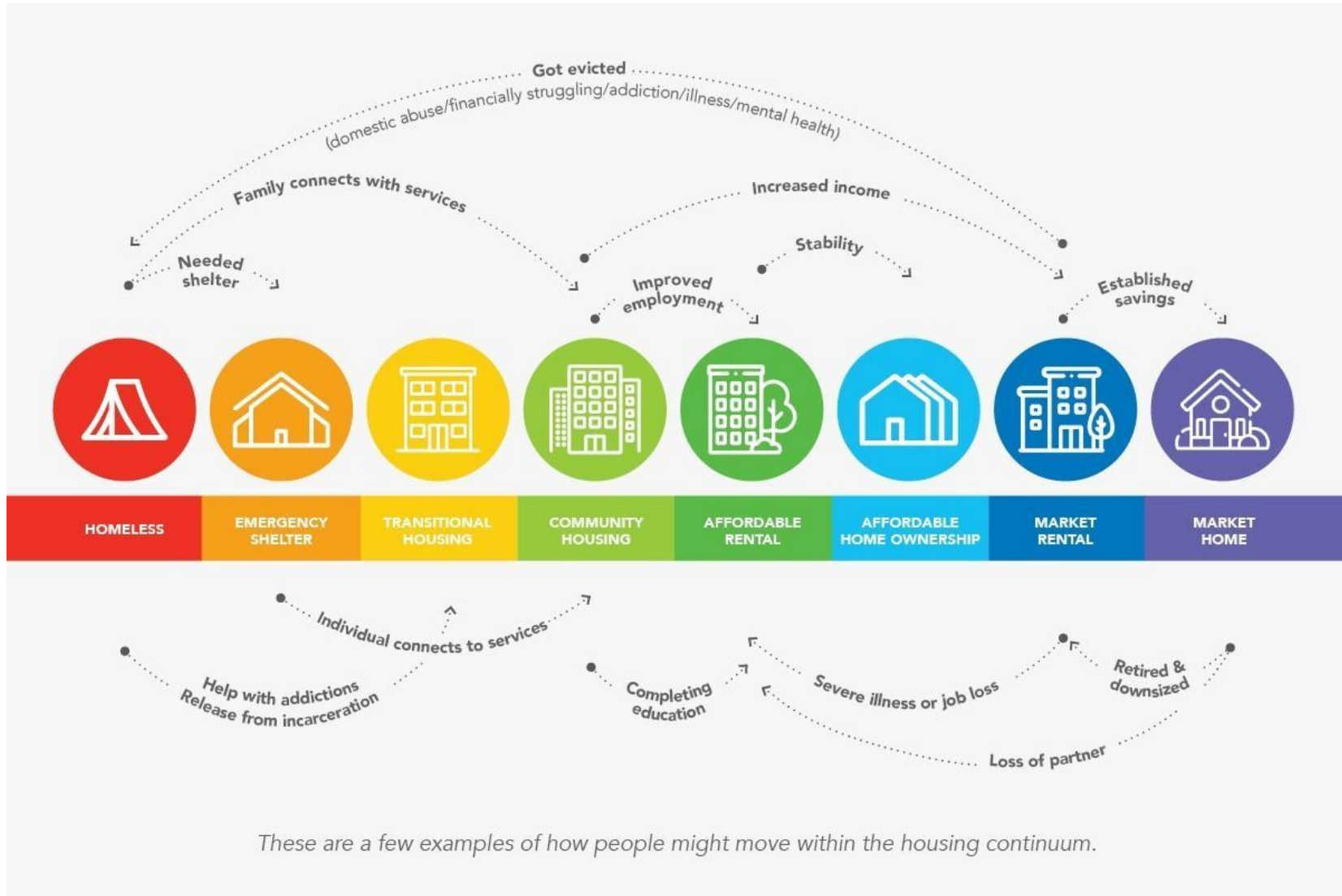




Homelessness and Housing Instability

Homelessness is the situation of an individual, family, or community without stable, safe, permanent, appropriate housing or the immediate prospect, means, and ability of acquiring it.





Rural Homelessness, unlike in urban centres, is **hidden**.

WHAT IS RURAL HOMELESSNESS?



Homelessness Among Older Adults

Older adults are considered 65+ and comprise of 17% of Canada's population (Statistics Canada, 2020).

“Functionally Geriatric”

There are two types of homelessness among older adults



What are the main concerns facing the aging homeless population?

- Premature aging; **“Functionally Geriatric”**
- Performing daily living activities
- Targets for crime
- Accessing benefits
- Mistrust in services
- Lack of affordable and accessible housing
- Lack of transportation options

Note: Increased adaptive needs leads to less independence overall



**Why is it
important to
distinguish
between younger
and older adults?**



Statistics: Older Adult Homelessness

There is a **lack of data** available on **homelessness older adults**

Homelessness among **older adults** is expected to **significantly increase over the next 5-10 years**



Homelessness among older adults **is not** just a housing problem; it is multidimensional, touching upon several issues including mental health, physical health, loneliness, and community wellbeing.



Creating Solutions Together



“Never doubt that a small group of thoughtful committed citizens can change the world.

Indeed, it is the only thing that ever has.”

- Margaret Mead

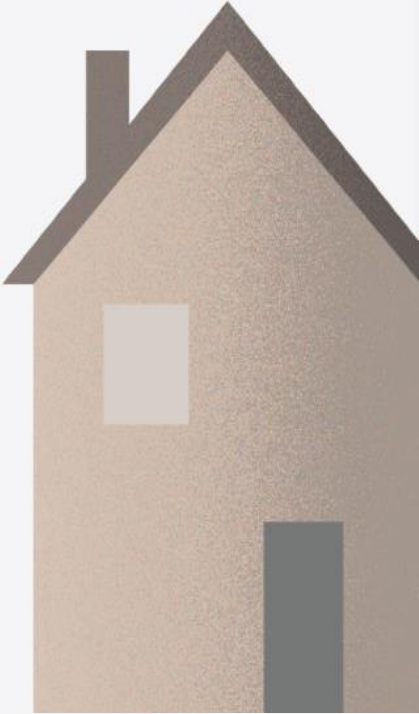


Responses and Best Practices

Shelter / Housing Options, Supports and Interventions for OPEH

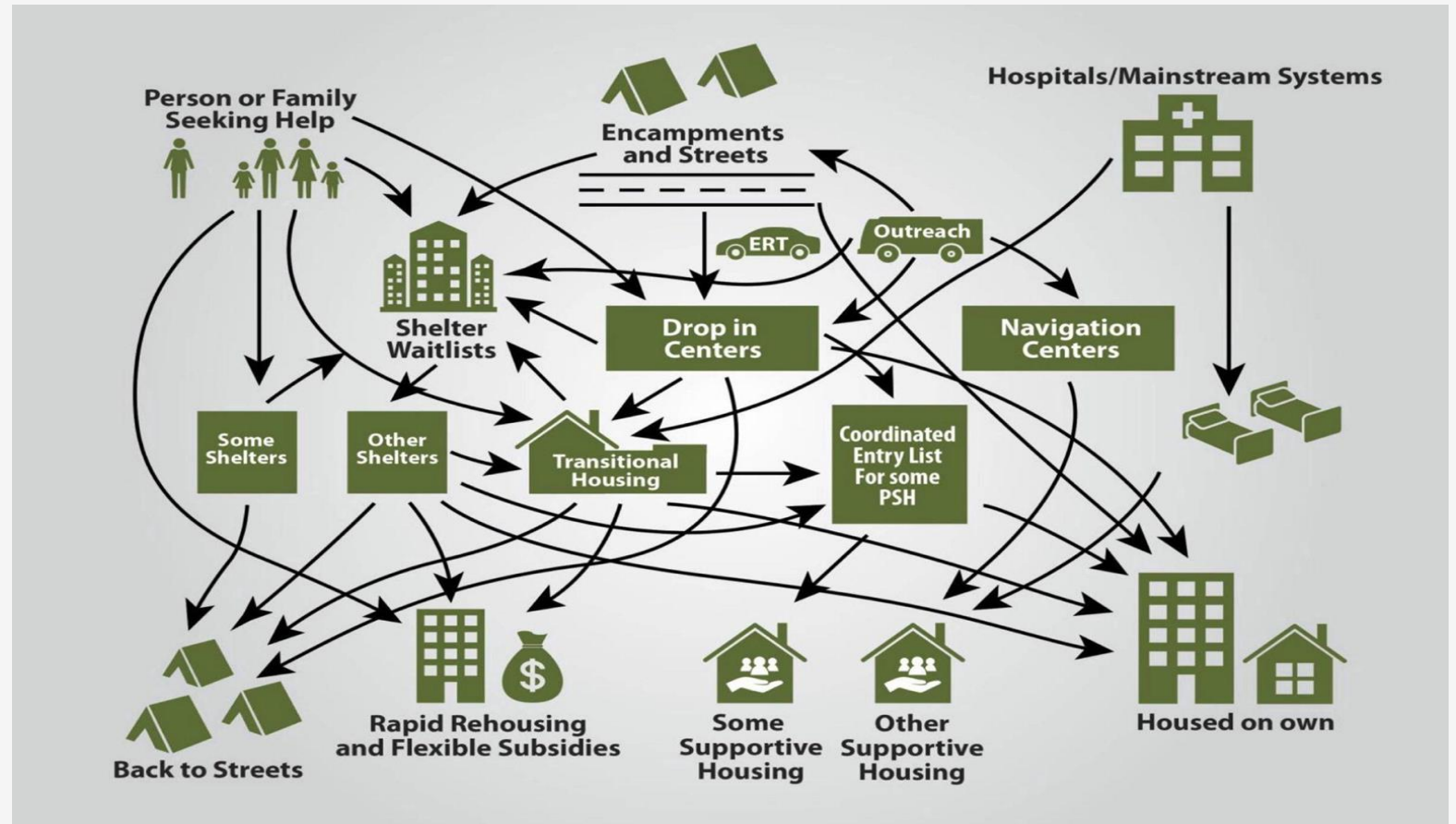
(Older people with experiences of homelessness)

- 1 Long-Term Care (LTC)
- 2 Permanent supportive housing (PSH)
- 3 Supported Housing
- 4 Transitional Housing
- 5 Emergency shelter settings with health and social supports
- 6 Case management and outreach

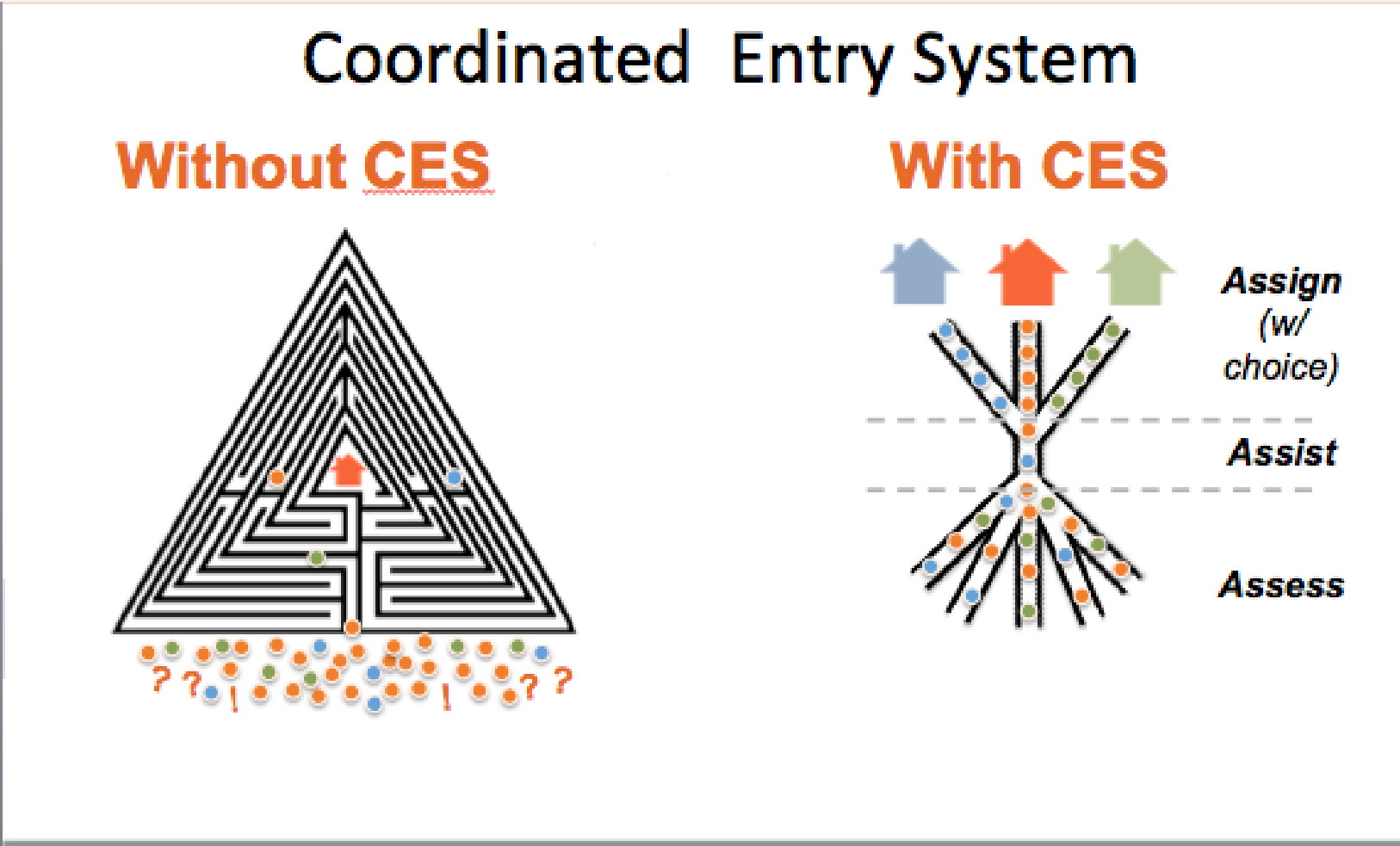


Responses and Best Practices

- Permanent Supportive Housing
- Affordable Accessible Housing
- Eviction Prevention
- Rental Assistance
- Housing Navigation Supports
- Coordinated Access
- Housing First Philosophy
- Policy Changes



Responses and Best Practices



The Center of Community Ends Homelessness



“Many Albertans facing homelessness are facing other serious challenges as well. Those from specialized groups – such as those with mental illness, those with addictions, victims of violence, seniors, those with disabilities, and homeless youth – are dealing with particularly challenging issues, and require special support to help address their unique situations. Targeted responses are required to effectively re-house homeless people from these specialized groups” (Alberta Secretariat for Action on Homelessness, 2008, p.13).



Responses and Best Practices

George Spady Society
Cloverleaf Manor Intensive
Supports Program (CL-ISP)
Warburg, AB

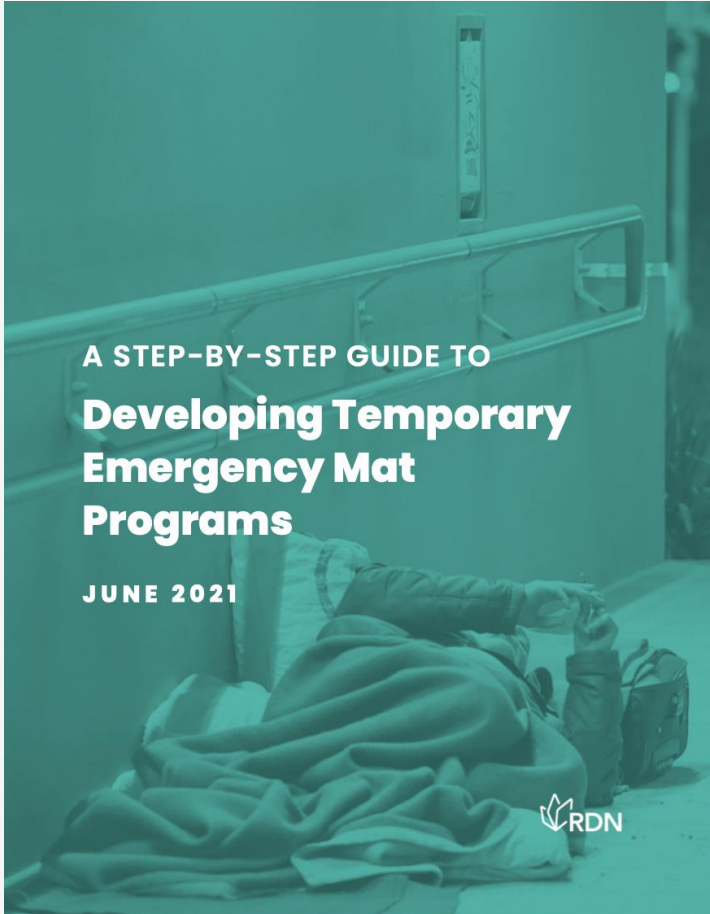
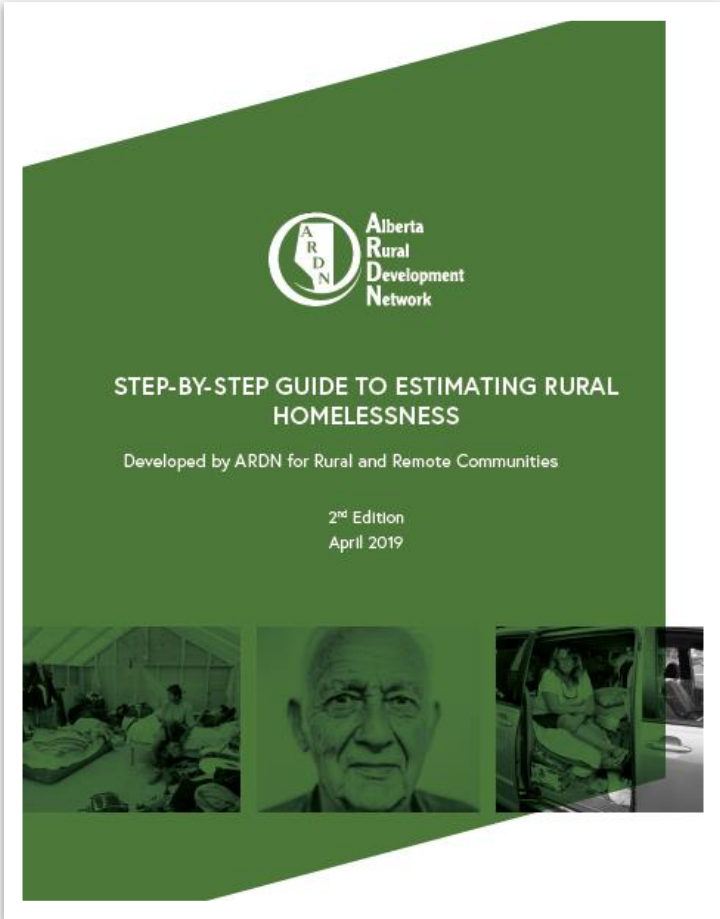


What Responses and Best Practices are you familiar with?

Share in the chat!



RDN's Responses and Best Practices



Creating Solutions Together



“Trauma is not what happens to you. Trauma is what happens inside you, as a result of what happens to you” - Dr. Gabor Mate



Thank You and Questions



Linda Bernicki

lindab@ruraldevelopment.ca



Emma Wallace

emmaw@ruraldevelopment.ca



Living Well in Seniors Affordable Housing

March 23, 2022

Irene Martin-Lindsay, Executive Director





Outline

- Part 1. Introduction to ASCHA
- Part 2. Membership
- Part 3. Living well from a Housing Perspective
- Part 4. Challenges and Opportunities
- Part 5. Community Partners
- Part 6. ASCHA Linkages and Direction

Part 1

Introduction to ASCHA

**“Albertans live in housing that
honours their dignity,
serves their needs and
inspires purpose
in their chosen community.”**

ASCHA's Noble Cause

“ASCHA provides member services and a bold unifying voice to support the providers of seniors and community housing.”

ASCHA's Purpose



ASCHA's Principled Advocacy Positions

Living well in Community

Housing Focus

Person-directed Choice

Part 2

ASCHA's Membership

Membership

- **Regular Members**

- Provide Seniors and/or Community Housing
- Have Voting Privileges

- **Associate Members**

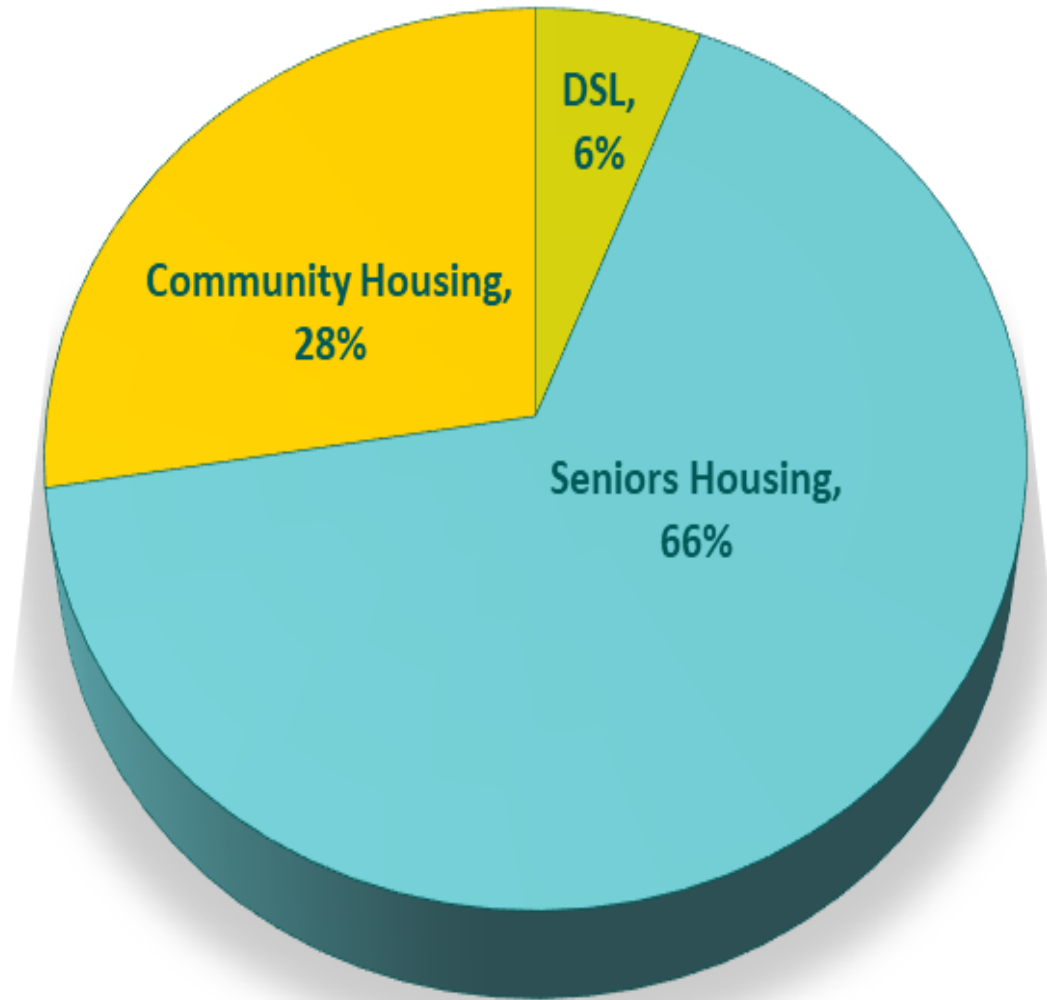
- Have Objectives and Provide Supports and/or Services Related to the Provision of Housing
- No Voting Privileges

Seniors Housing



Community Housing

2021 Membership by Portfolio Units



Continuing Care System

Home Living	Supportive Living		Facility Living
<i>Seniors Housing Accommodation Only</i>	<i>Seniors Housing with Service Options</i>	<i>Seniors Housing with Service Options and Health Supports</i>	
<p>Seniors Self-Contained 14,300 spaces</p> <p>10,000+/- seniors 55 + spaces in a range of independent living</p> <p>*Many residents/tenants rely on supports from the community if they require them</p>	<p>Licensed Supportive Living 21,300 spaces</p> <p>includes 10,500 Lodge spaces</p> <p>*Services include housekeeping, meals, security, activities, regular staffing; but not on-site health supports except home care</p>	<p>Designated Supportive Living (DSL)</p> <p>11,916 spaces, Including 3000 +/- Private pay spaces</p> <p>*This is the option where health supports are provided ON SITE. Differs from Long Term Care in that health supports only go up to 24/7 LPNs.</p>	<p>Long Term Care (LTC) 15,800 spaces</p> <p>* Under the Nursing Homes Act with 24/7 RN support</p>
127,000 Albertans receiving home care			
ASCHA Members Represented			



SENIORS HOUSING -
ACCOMMODATION ONLY



SENIORS HOUSING
WITH SERVICE OPTIONS



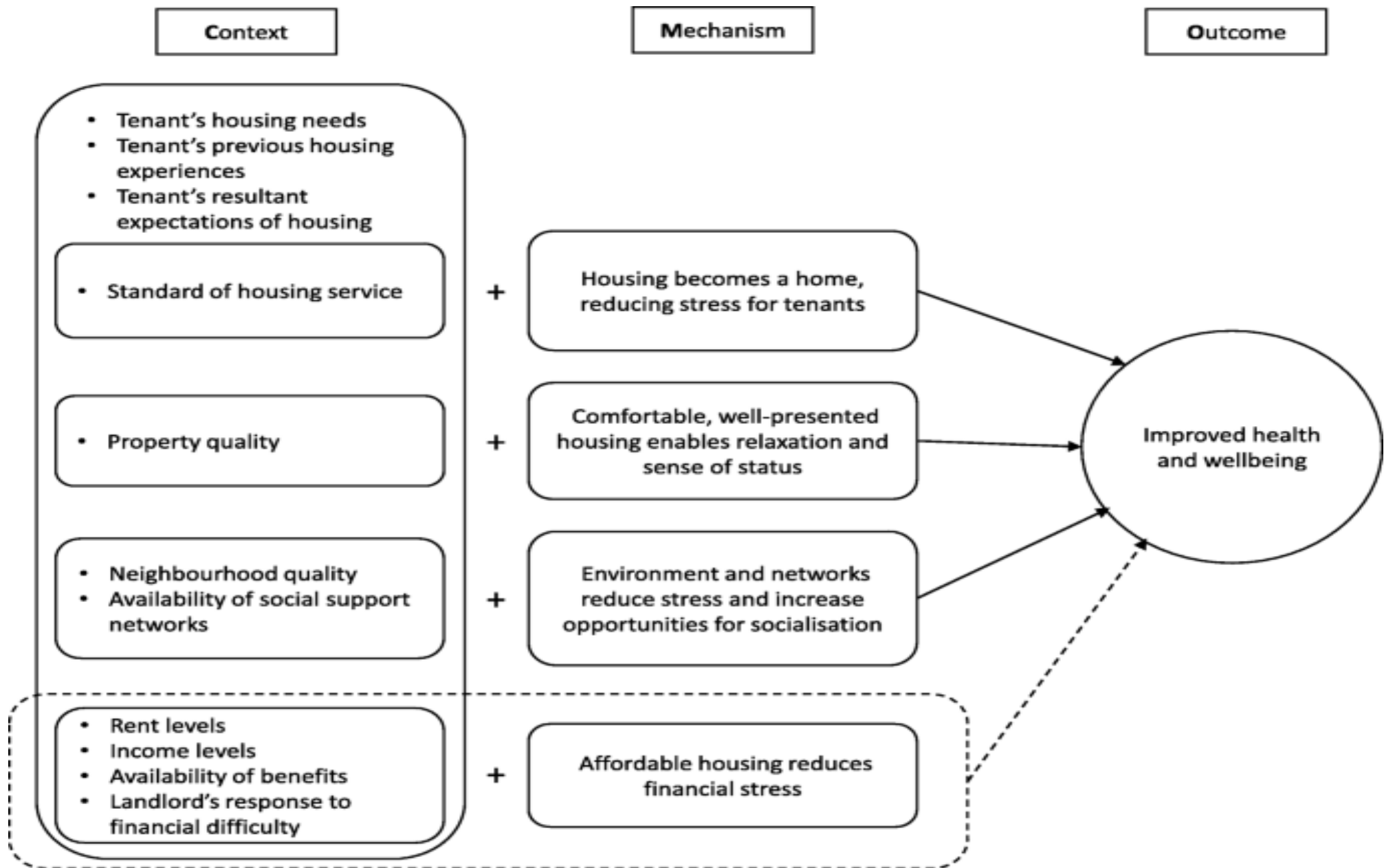
SENIORS HOUSING WITH SERVICE
OPTIONS AND HEALTH SUPPORTS

Part 3

Living well from a
housing perspective

Living well in community, from a housing perspective

- Safety and security
- Accommodation costs no more than 30% of income
- Well maintained building and suitable space
- Responsiveness of landlord to problems/financial issues
- Close to amenities, support network and community services



Part 4

Challenges and Opportunities

Challenges

- Supply of Affordable Housing insufficient
- Appropriate Operating and maintenance funding
- Access to capital
- Affordable land in desirable communities close to amenities
- Appropriate and sufficient community supports
- Insufficient wellness/prevention supports within medical model

Opportunities

- Seniors Supportive Living/Lodges as a community hub
- Mixed market models
- Partnership models
- Increased focus on home care and new client directed models
- Ownership transfer, leverage capital for new development

***Housing is a priority across all three levels of government
– the opportunities to propose solutions is NOW!***

Part 5

Community Partners

It takes a village!

- Seniors/Community Centres
- Home Care
- Schools
- Health clinics/including diagnostics
- Wellness supports – foot care, dental, therapies, etc.
- Friends and Family
- Transportation
- Volunteers
- Support service availability – grounds maintenance, repairs, etc.

Maslow's Hierarchy of Needs



Part 6

ASCHA Linkages and Direction

Linkages and Resources

ASCHA's Website

- Housing Directory
- Navigational Categories
- Advocacy Messages
- Networking Events
- Education Opportunities

***Housing & Continuing Care are in transformation
Let's all unite to inform positive changes!***

Thank you

We are your housing
resource at:

www.ascha.com

Contact us at:

ascha@ascha.com

Time for Question and Answer



Upcoming Sessions



You're invited to join the
AGE-FRIENDLY HOUSING SERIES!
*Housing in an Age-Friendly World -
From Homelessness to Continuing Care*



- April 27, 2022
Characteristics of age-friendly housing for seniors
- May 18, 2022
Innovative age-friendly housing models for seniors
- June 22, 2022
Supportive housing and Continuing Care

Thank you