

Community Assets for Older Adults in Jasper



This resource was developed by PolicyWise as part of a Fall 2023 asset mapping session held with Healthy Aging Alberta and organizations serving older adults in Jasper.

- Asset mapping is a strengths-focused process of identifying existing assets within a community. It is a method to document, categorize and organize assets for easy reference.
- The Healthy Aging Framework was used to guide the asset mapping session and develop the asset map. Each community asset is mapped to one of six determinants of healthy aging and an associated service area.
- The asset map is a useful tool for Link Workers connecting older adults to assets in their community

This asset map is a starting point and will benefit from further development as the Link Worker engages within the community.

Individual Gifts of Older Adults



Social prescribing is a strengths-based, reciprocal process with the older adult at the center, possessing unique gifts



Determinants of Healthy Aging and Service Areas



Social Environment & Engagement

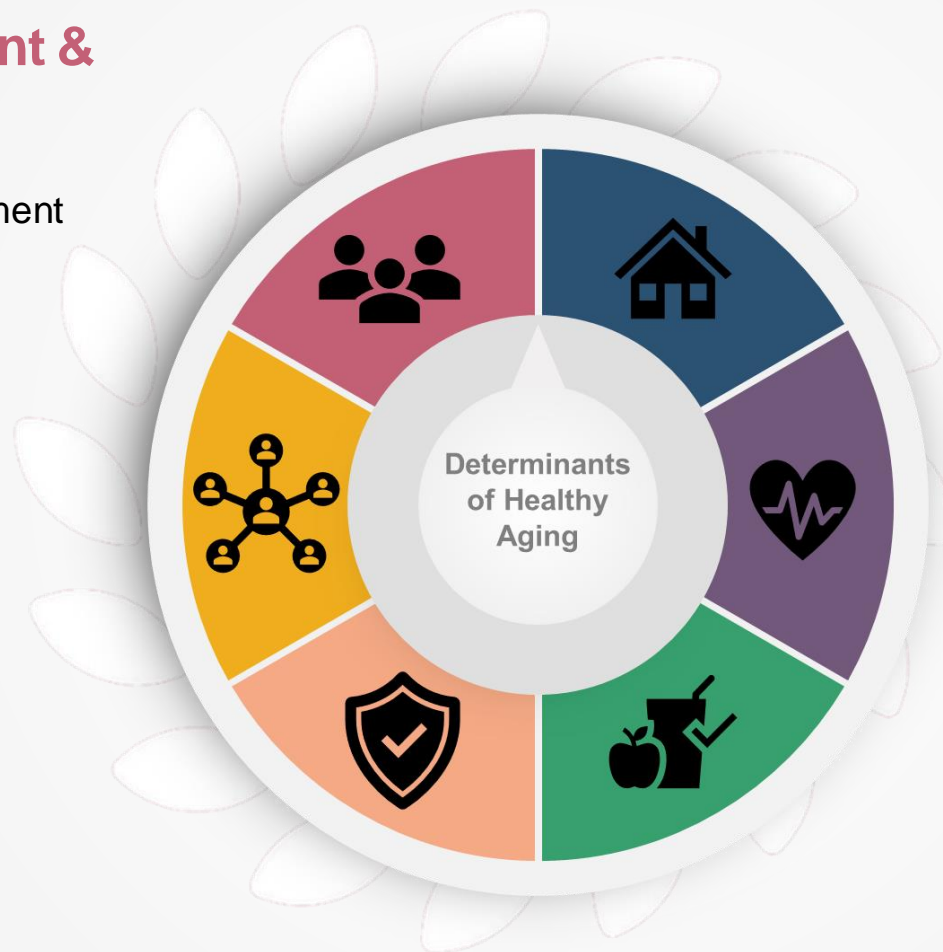
- Social engagement
- Participation & engagement
- Engaging with peers
- Outdoor activity
- Diversity & inclusion
- Volunteerism

Social Support

- Information & referral
- Social support services
- Caregiver supports

Safety & Security

- Personal safety
- Financial security
- Vocational training & support



Physical Environment

- Transportation
- Housing
- Home Supports

Physical & Mental Health

- Physical health & wellness
- Physical fitness
- Healthy lifestyle choices
- Mental health & wellness
- Brain health

Personal Wellbeing

- Resiliency
- Emotional wellbeing
- Personal services
- Food & nutrition

Frequently Identified Assets for Older Adults in Jasper



Social Environment & Engagement

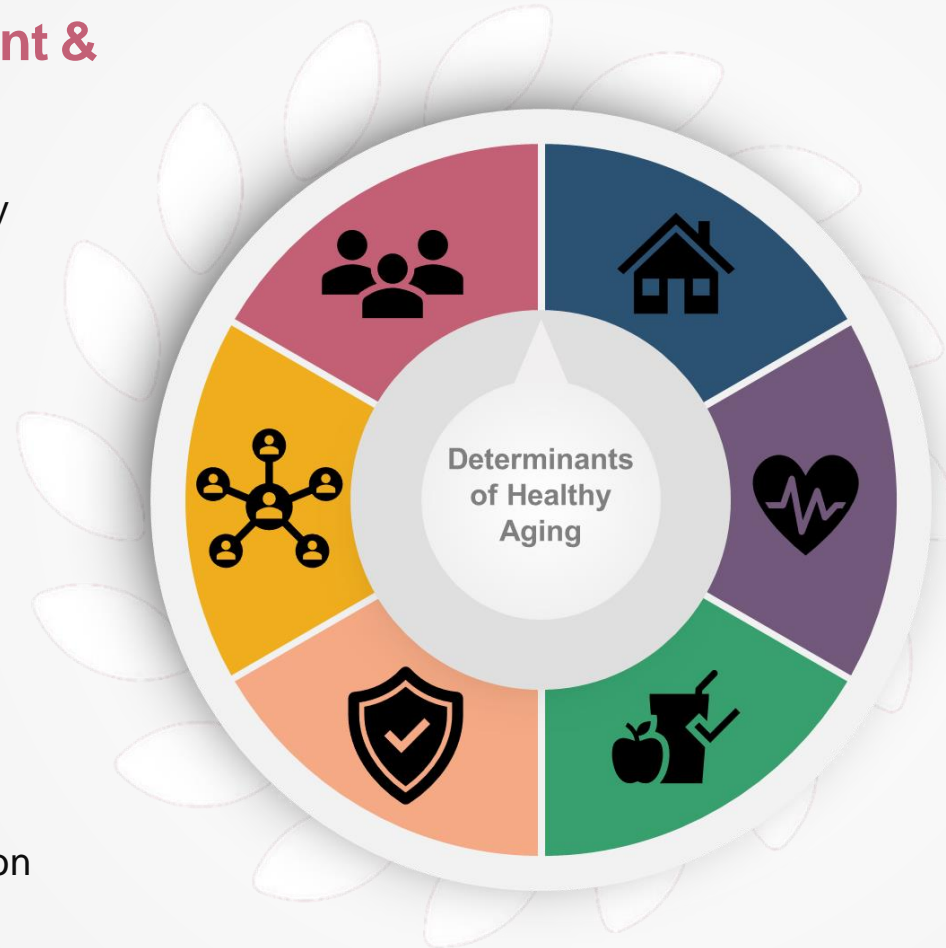
- Community Dinners
- Jasper Municipal Library
- Jasper Senior Society

Social Support

- Community Outreach Services (COS)
- Golden Years: A Senior Living Guide for Hinton and Jasper

Safety & Security

- COS Scam Prevention Information Sessions
- COS Violence Prevention and Crisis Work
- Local Hospital
- RCMP



Physical Environment

- The Alpine Traveler Seniors Bus

Physical & Mental Health

- Activity Centre
- Alberta Health Services Home Care
- Senior-friendly Walking Paths

Personal Wellbeing

- Community of Faiths & Churches
- Glenda the Great Catering Ltd.
- Jasper Food Bank
- Jasper Food Recovery

Note: These assets were more frequently identified by session participants. They are indicated with a  on the following pages.

Physical Environment



Transportation

- Public transportation
- Sundog Bus for medical appointments
- Taxis & cab services
- **The Alpine Traveler Seniors Bus**



Home Supports

- House cleaning
- Snow Angels

Housing

- Alpine Summit Seniors Lodge
- Evergreens Foundation Facilities
- Jasper Community Housing Corporation

Physical & Mental Health



Brain health

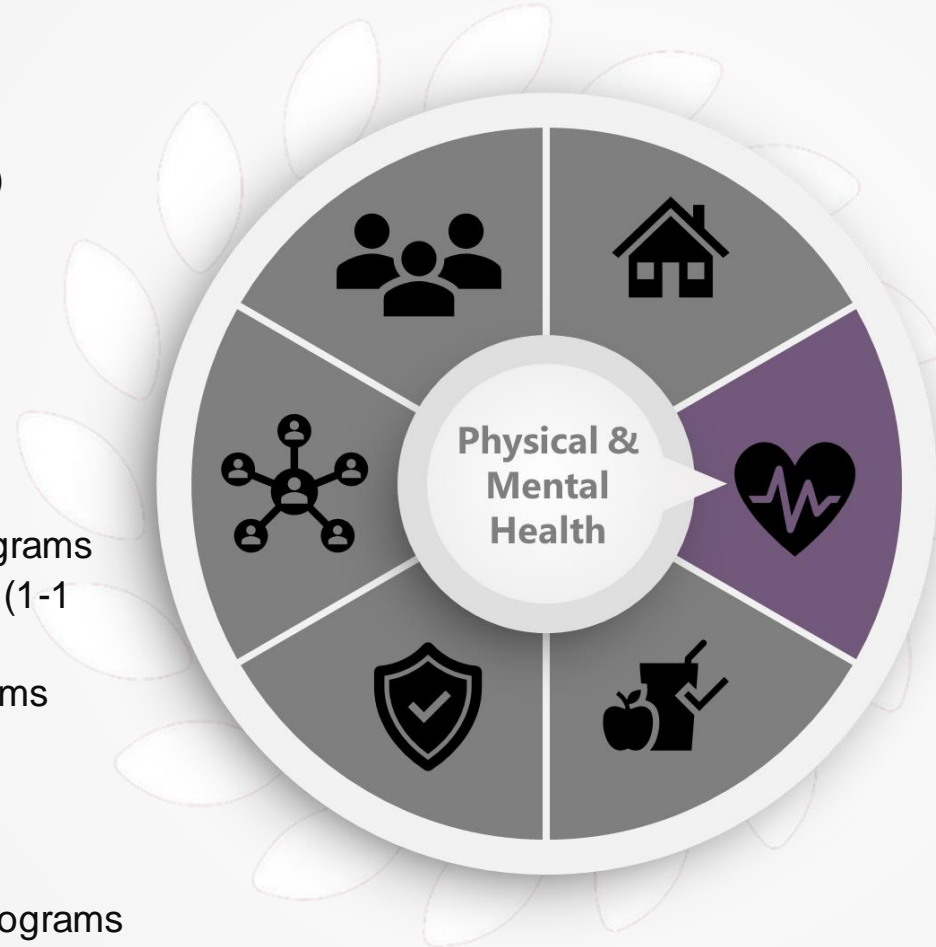
- Jasper Employment & Education Centre (JEEC) Programs
- Public Library Programs

Mental health & wellness

- Canadian Mental Health Association (CMHA) Programs
- Home Supports Program (1-1 Service)
- Wellness Canada Programs

Healthy lifestyle choices

- Alberta Healthy Living programs (e.g., Nutrition and Healthy Eating)



Physical health & wellness

- **AHS Home Care services**
- Aurora EyeCare Jasper
- Cottage Medical Clinic
- Foot Care
- Hospital medical services
- Medical clinics
- Pharmacy

Physical fitness

- **Activity Centre**
- Aquafit at the Jasper Park Lodge Pool
- December Project
- Jasper Hiking Buddies
- Nordic Polls for Walking Club
- **Senior-friendly walking paths**
- Tennis Club

Personal Wellbeing



Food & nutrition

- Community Garden
- Farmer's Market
- 🍃 **Food Bank**
- 🍃 **Glenda the Great Catering Ltd.**
- Grocery delivery services
- 🍃 **Jasper Food Recovery**
- Jasper Local Food Society
- Meals on Wheels

Emotional wellbeing

- Death Cafes (AHS)



Resiliency

- 🍃 **Community of Faiths & Churches**

Personal services

- Buy Sell Trade
- Coffee shops
- Dhamma Wheels
- Jasper United Church Thrift Shop

Safety & Security



Vocational training & support

- 1:1 Digital Literacy for Older Adults (JEEC)

Personal safety

- COS Scam Prevention Information Sessions
- COS Violence Prevention and Crisis Work
- Local Hospital
- RCMP



Financial security

- Coat Rescue Program (COS)
- Community Volunteer Income Tax Program (COS)
- Senior Discounts at Local Businesses
- Senior Resume Bank (JEEC)

Social Support

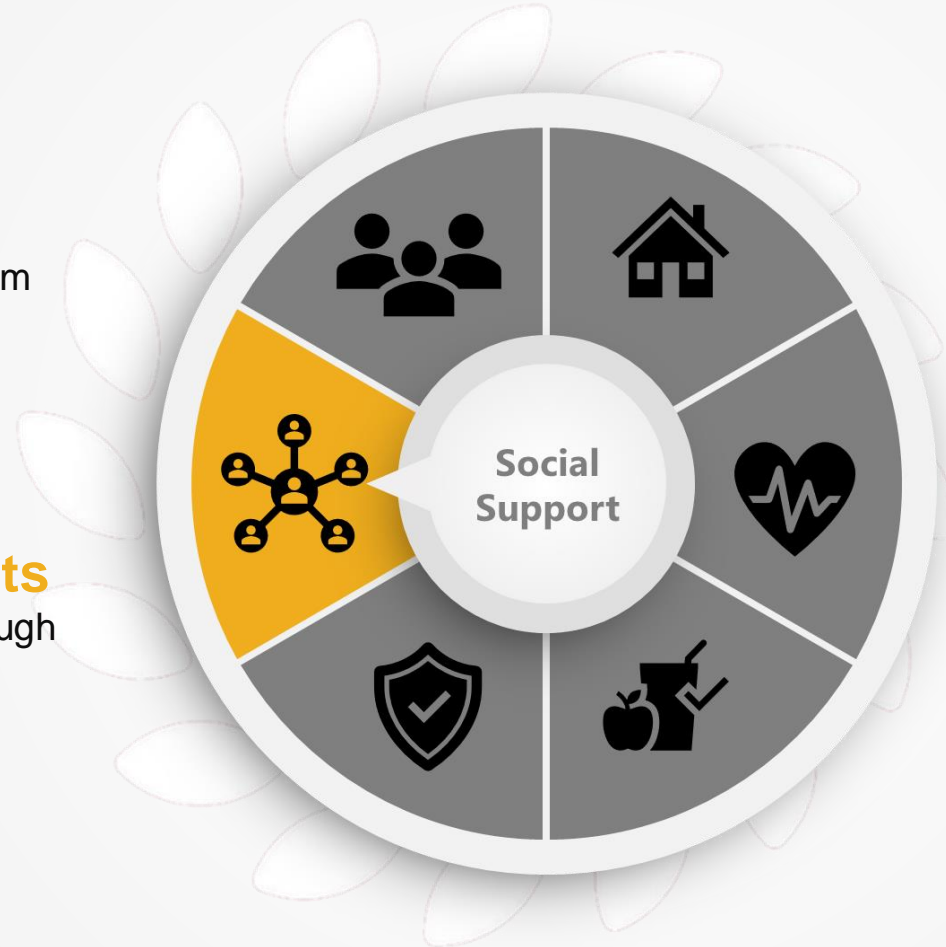


Social support services



- Jasper Community Team Society
- Responsive Council

Caregiver supports

- Caregiver Training through COMPASS for the Caregiver



Information & referral

- Community Calendar
-  Community Outreach Services (COS)
-  Golden Years: A Senior Living Guide for Hinton and Jasper
- Jasper Community Guide
- Seniors News in Local paper

Social Environment & Engagement



Volunteerism

- Community Conversations
- Community Helpers Program
- Friends of Jasper National Park
- Santas Anonymous

Diversity & inclusion

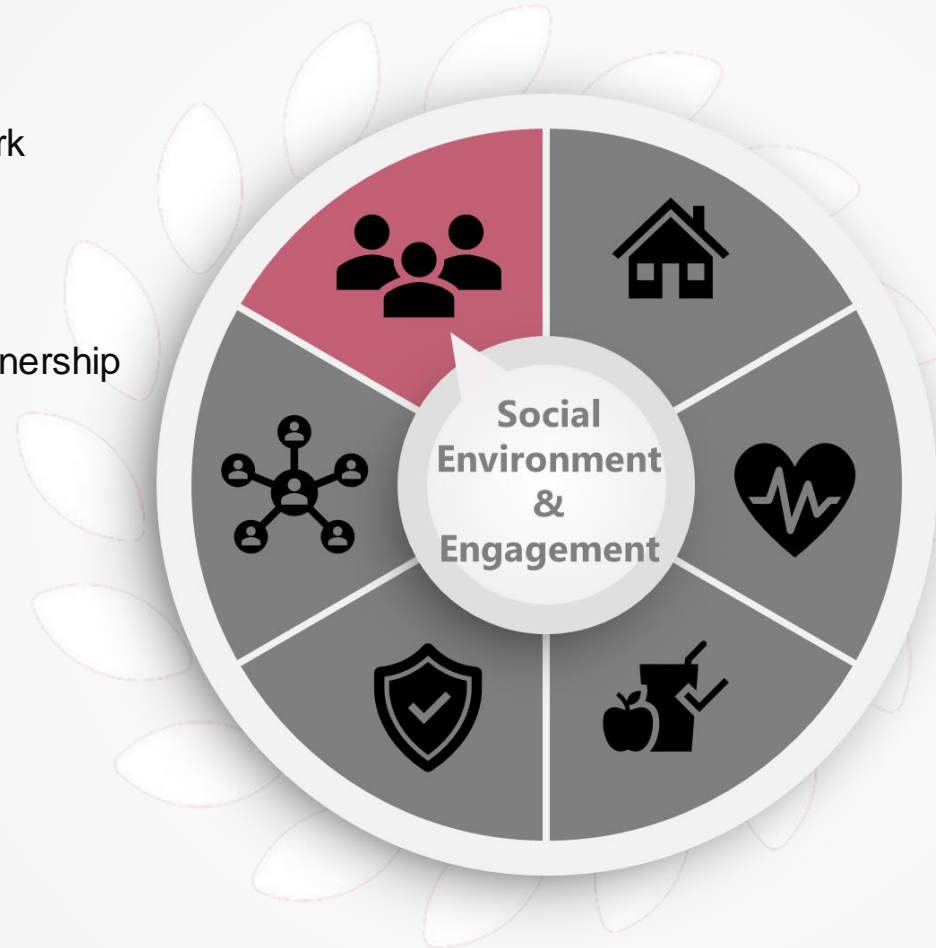
- Cultural Events
- Jasper Local Immigration Partnership
- Jasper Settlement Service
- Newcomer Network
- Out Jasper

Outdoor activity

- Cross Country Ski Trails
- Discovery Trail
- Dog Park
- National Parks
- Outdoor Activities
- Parks and Green Space
- Skating Rinks

Engaging with Peers

- A&W
- **Jasper Senior Society**



Social engagement

- Alpine Summit Lodge Daily Social Activities
- Coffee Connections
- Community Culture Nights
- Fairmont Jasper Park Lodge
- Habitat for the Arts
- Hinton Nearby
- Indoor Spaces
- McCreedy Centre
- Museum Coffee Hour
- Neighbour Relationships
- Post Office

Participation & engagement

- Adult Education Programs
- **Community Dinners**
- Community Guide
- Jasper Adult Day Program
- **Jasper Municipal Library**
- Men's Shed