

Social Prescribing for Older Adults: First Year Findings



November 2nd, 2023

Hosted by:



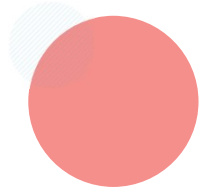
A network of
community allies
for older adults.



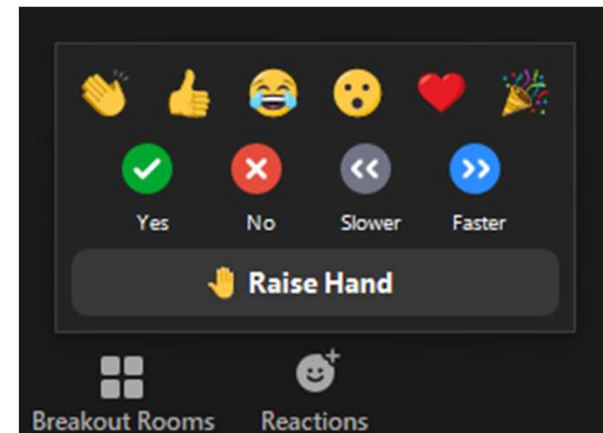
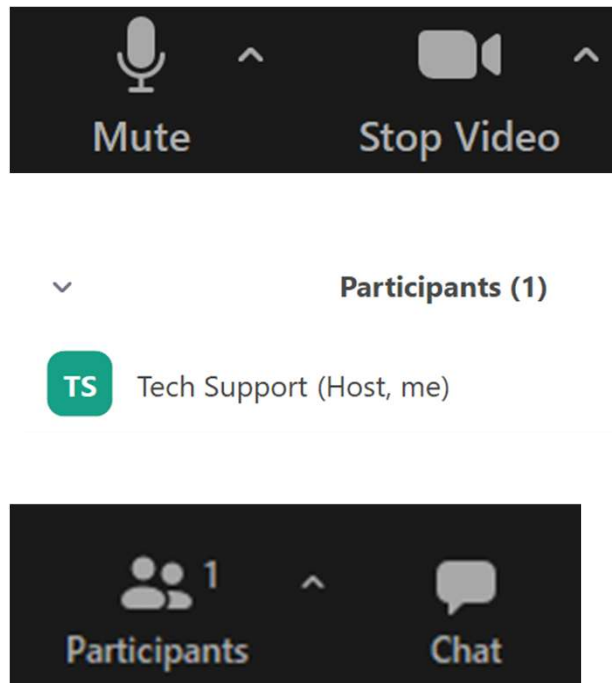


In the spirit of our journey to promote reconciliation, we would like to honour the truth of the shared history and acknowledge the many First Nations, Métis and Inuit who have lived in and cared for these lands for generations.

We are grateful for the traditional Knowledge Keepers and Elders who are still with us today and those who have gone before us.



Housekeeping

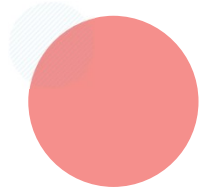


This session will be recorded, and the slides will also be available.

They will be uploaded on the CORE Alberta platform <https://corealberta.ca/>



Topic	Speaker	Time
Overview of Year 1 Healthy Aging Alberta Work	Beth Mansell, Provincial Social Prescribing Project Manager, Healthy Aging Alberta	20 Minutes
Edmonton Regional Project – Year 1 Results, Successes and Challenges	Krista Mulbery, Edmonton Social Prescribing Project Manager, Edmonton Seniors Coordinating Council	15 Minutes
Calgary Regional Project – Year 1 Results, Successes and Challenges	Megan Hincks, Network Coordinator, The Way In Network	15 Minutes
Lethbridge Regional Project – Year 1 Results, Successes and Challenges	Heather Bursaw,	15 Minutes
Vulcan Regional Project – Vision for Social Prescribing	Ruth Mueller, Community Development Coordinator, AHS/Vulcan Act4Health Coalition	7 Minutes
Innisfail Regional Project – Vision for Social Prescribing	Dixie McLeod, Senior Practice Specialist, McMan Youth, Family and Community Services Association	7 Minutes
Q&A		10 Minutes



Social Prescribing

A HOLISTIC APPROACH TO HEALTH

SOCIAL PRESCRIBING

A FORMAL REFERRAL PATHWAY

Connecting healthcare providers to community-based services for older adults



Healthcare Providers



Primary care



Hospital discharge



Home care

Link Workers



Referral Pathway

BRIDGING THE GAP



Holistic assessment



Co-create goals and care plan



Regular support and follow-up



Progress updates for healthcare providers

Aging in Community Supports



Meal preparation and food security support



Case management support



Home and yard maintenance, and snow removal



Financial assistance



Transportation support



Service navigation



Social and recreational programs

Provincial Principles Social Prescribing:

requires a formal pathway to connect clinical care to community-based services

01

begins with an identifier – who is considered a clinical professional

02

is a holistic, person-centred approach

03

is strength-based

04



05

is co-creative

06

is community led

07

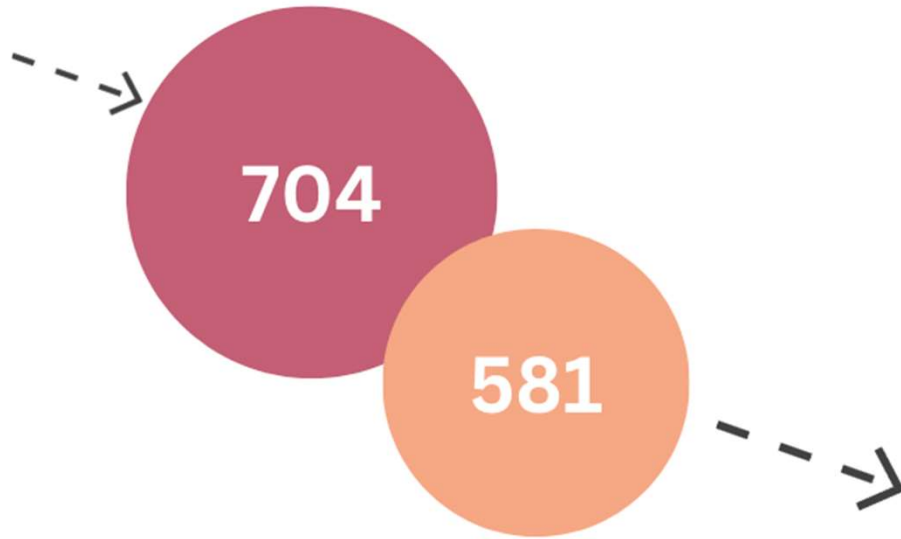
is not a one-size-fits-all approach

08

is rooted in health equity

Phase 1

SOCIAL PRESCRIPTIONS MADE

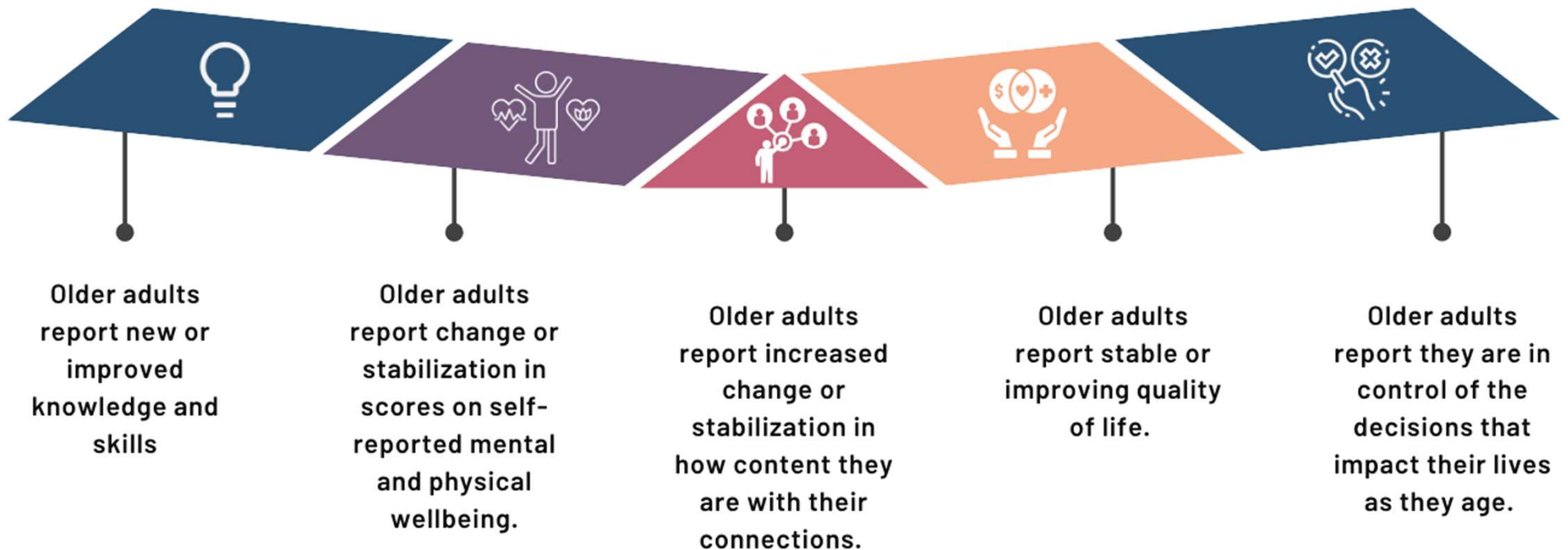


OLDER ADULTS SERVED



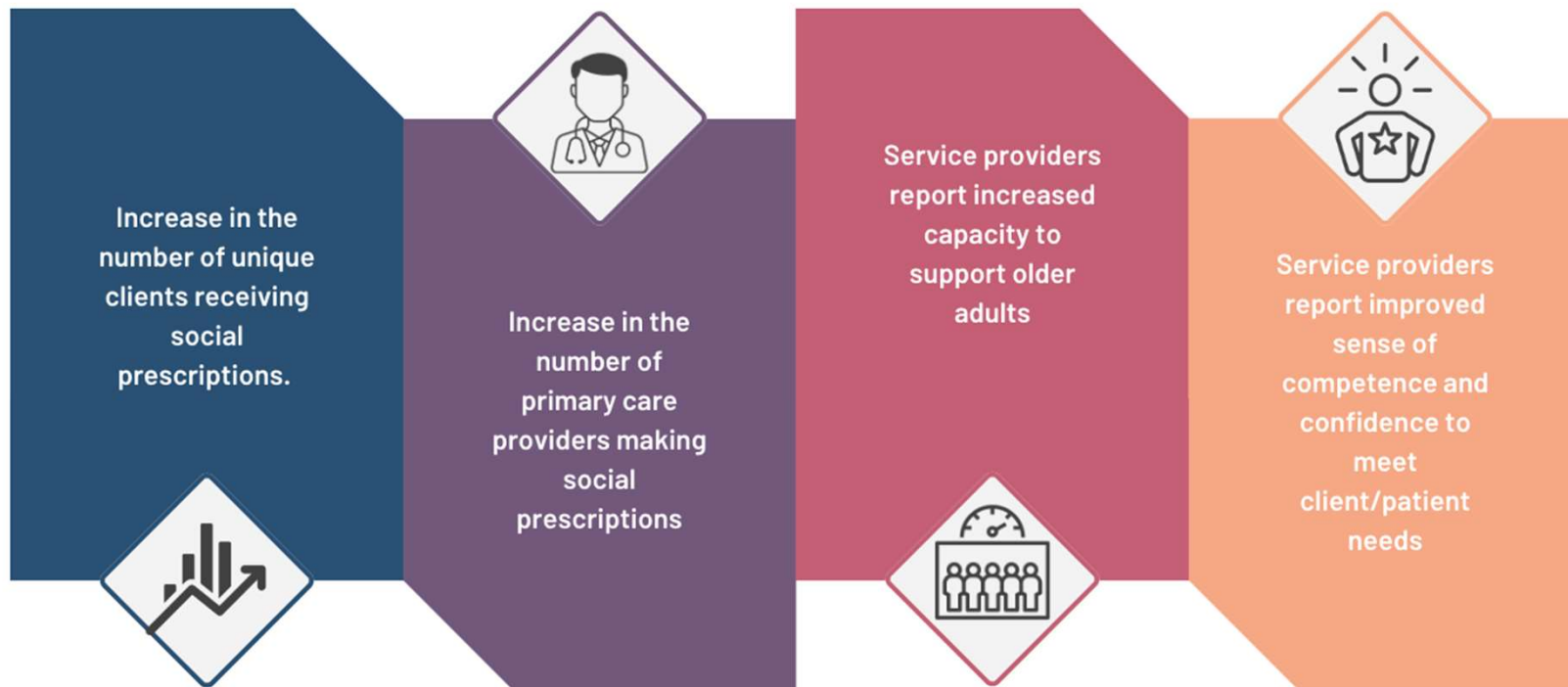
Evaluation Framework – Older Adults

To what extent, and in what ways, are regional project making progress towards achieving anticipated outcomes for older adults?



Evaluation Framework – Service Providers

To what extent, and in what ways are regional projects making progress towards achieving anticipated outcomes for service providers of older adults in both the health and social service sectors?



Evaluation Framework – Health Outcomes

To what extent, and in what ways, is the regional project making progress towards achieving anticipated outcomes for the health system?

Service providers report that relationships between community partners have improved



Service providers report that service delivery models are becoming more streamlined and strong



Service providers report that referral pathways are improving



Service providers report that there is increased data sharing across community-based organizations and the health system

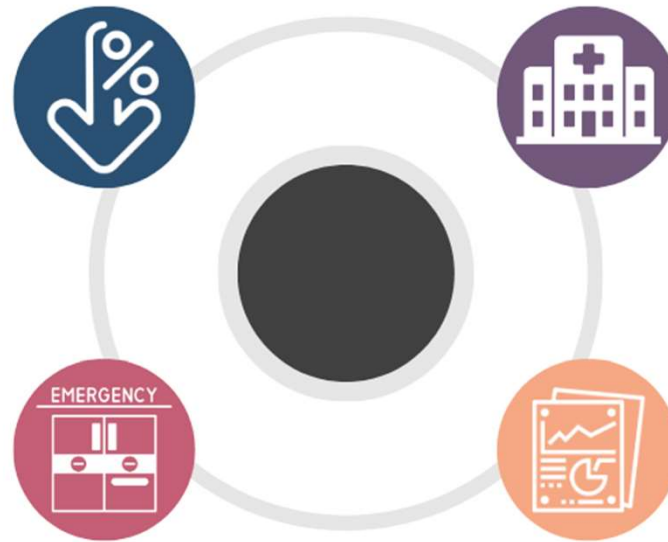


Evaluation Framework – Health Outcomes

To what extent, and in what ways, is the regional project making progress towards achieving anticipated outcomes for the health system?

Key Stakeholders from the Primary Care sector report that older adults referred for social prescribing services have a reduction in non-medical primary care visits

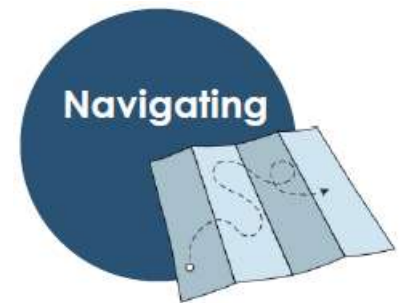
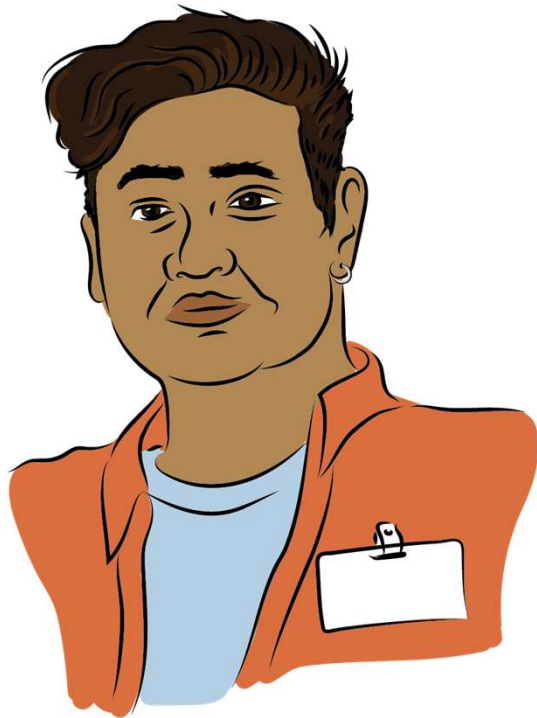
Older adults report they have reduced the frequency of their visits to the emergency room



Older adults report they have reduced the frequency of their admissions to the hospital and decrease their length of stay when admitted

Service providers report they have increased capacity to collect, analyze, and report on the information they need to understand the impact they are having on their clients.

Link Worker – Core Competencies



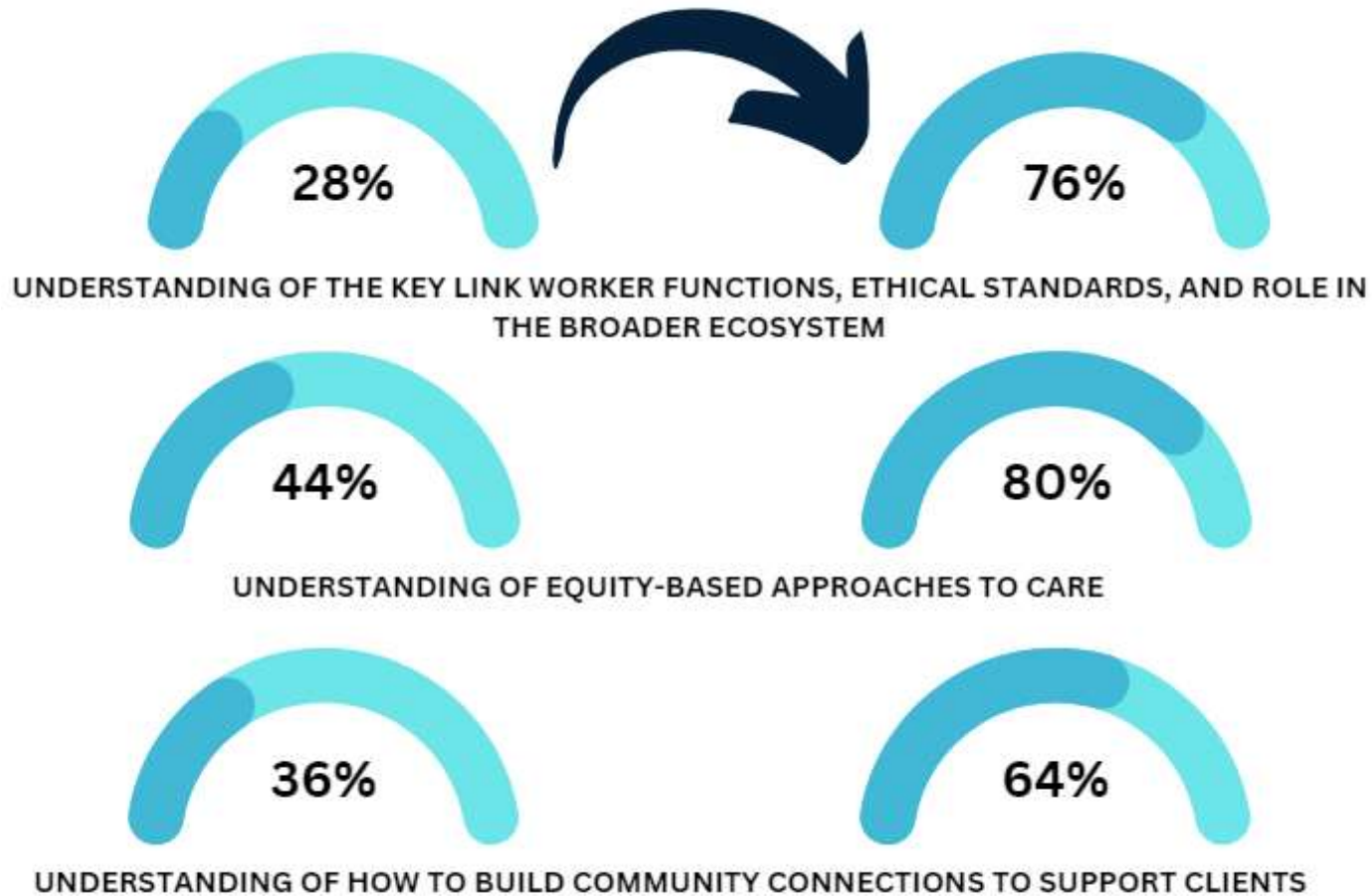
Link Worker Curriculum

5 Modules:

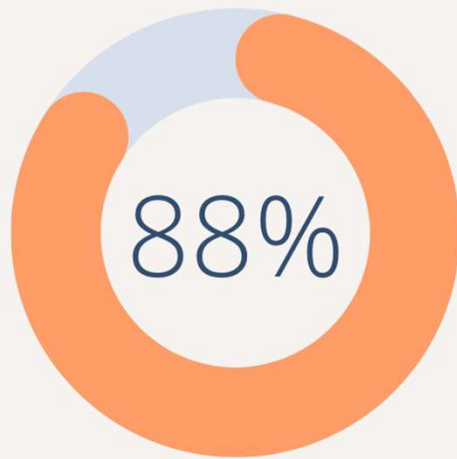
- **Module 1 – The Link Worker Function and Ecosystem - Start immediately as part of onboarding**
- **Module 2 – Equity Based Approaches to Care – Complete after Module 1 as part of onboarding**
- **Module 3 – Practical Skills for Serving your Clients – Complete after Module 2 as part of onboarding**
- **Module 4 – Building Community Connections to Support your Clients - Completed within 30 days of starting your Link Worker role**
- **Module 5 – Supporting your Wellbeing - Completed within 60 days of starting your Link Worker role consultation with your supervisor**



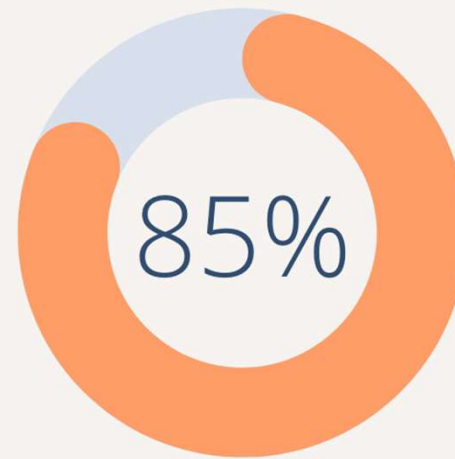
Link Worker Competency Improvements



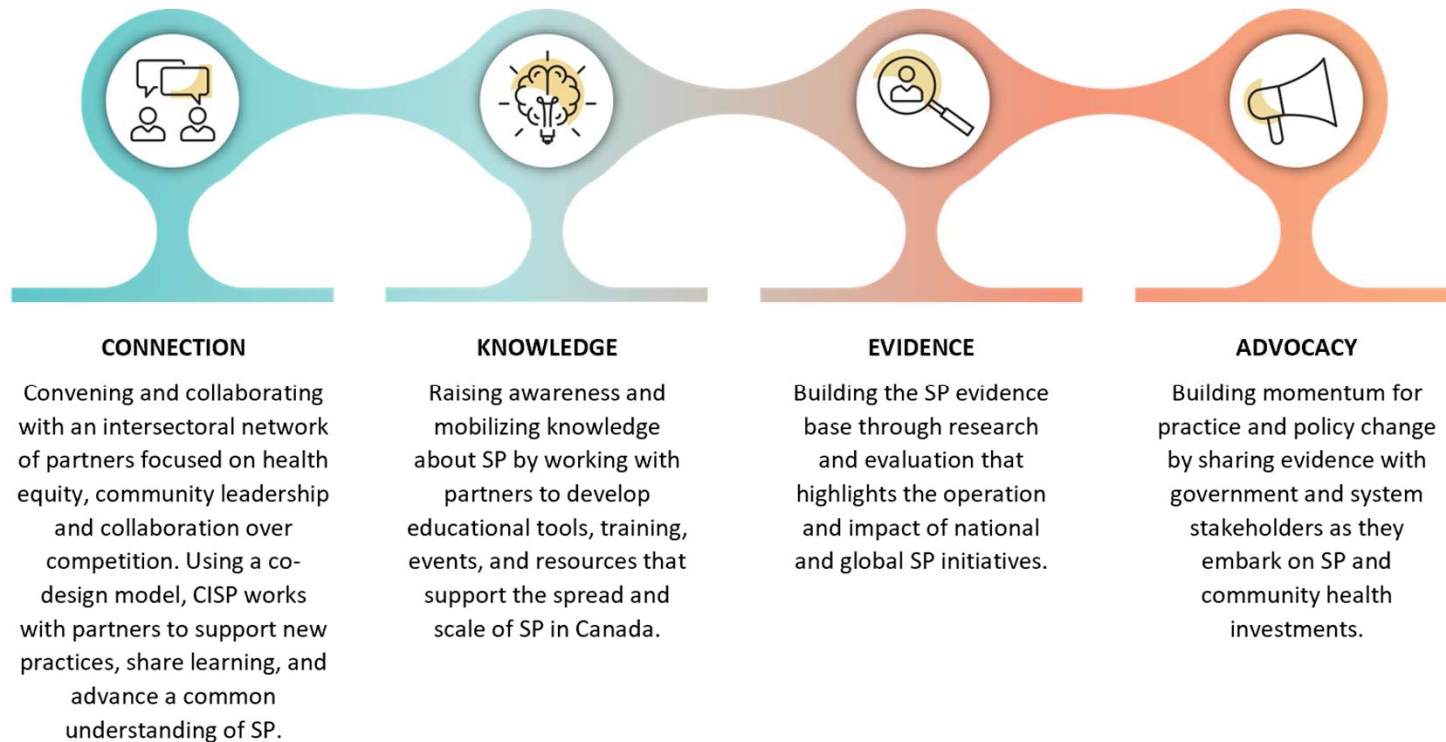
Link Worker Curriculum










agreed that the topics covered were relevant and useful to their role



indicated that they were confident, or very confident, in their ability to apply the knowledge and skills from this training in their practice



Phase 2

-  Jasper
-  Whitecourt
-  Sylvan Lake
-  Innisfail
-  Red Deer County
-  Wheatland County
-  Vulcan



What Can You Do?

